

**SEASONAL TABLES AND CHARTS FOR
STEERS AND HEIFERS
FROM GEORGIA AUCTION MARKTES**

Georgia Auction Prices
300-400 Pound Steers

Year	Jan	Feb	Mar	Apr	May	Jun	Jul	Aug	Sep	Oct	Nov	Dec
1990	\$ 106.75	\$ 112.83	\$ 121.80	\$ 120.63	\$ 115.25	\$ 113.40	\$ 110.50	\$ 115.90	\$ 113.10	\$ 110.50	\$ 114.00	\$ 120.25
1991	\$ 116.56	\$ 127.50	\$ 132.05	\$ 132.81	\$ 128.00	\$ 126.20	\$ 121.58	\$ 118.65	\$ 115.94	\$ 113.00	\$ 108.06	\$ 107.83
1992	\$ 100.48	\$ 110.11	\$ 111.69	\$ 110.21	\$ 103.23	\$ 104.27	\$ 104.21	\$ 105.60	\$ 105.00	\$ 100.90	\$ 99.77	\$ 98.77
1993	\$ 108.50	\$ 113.07	\$ 116.60	\$ 117.43	\$ 113.31	\$ 111.65	\$ 110.30	\$ 110.02	\$ 108.14	\$ 107.32	\$ 104.10	\$ 106.67
1994	\$ 111.78	\$ 114.28	\$ 115.97	\$ 109.81	\$ 99.85	\$ 95.77	\$ 95.10	\$ 95.89	\$ 91.33	\$ 86.84	\$ 91.86	\$ 92.52
1995	\$ 98.16	\$ 96.77	\$ 91.97	\$ 86.11	\$ 79.67	\$ 78.33	\$ 72.27	\$ 74.14	\$ 69.36	\$ 67.27	\$ 64.06	\$ 64.05
1996	\$ 61.59	\$ 61.45	\$ 61.14	\$ 53.10	\$ 50.93	\$ 52.69	\$ 56.74	\$ 60.65	\$ 62.52	\$ 60.46	\$ 63.50	\$ 65.42
1997	\$ 75.42	\$ 83.39	\$ 91.94	\$ 95.30	\$ 97.10	\$ 97.55	\$ 104.96	\$ 99.94	\$ 98.28	\$ 95.80	\$ 91.83	\$ 95.58
1998	\$ 97.27	\$ 103.75	\$ 103.74	\$ 105.08	\$ 99.11	\$ 86.47	\$ 78.34	\$ 79.73	\$ 76.78	\$ 79.78	\$ 85.56	\$ 91.29
1999	\$ 93.55	\$ 97.99	\$ 96.86	\$ 97.32	\$ 94.38	\$ 97.45	\$ 99.72	\$ 99.03	\$ 98.30	\$ 99.59	\$ 99.11	\$ 107.17
2000	\$ 112.66	\$ 115.17	\$ 122.70	\$ 122.14	\$ 113.50	\$ 113.33	\$ 120.36	\$ 117.85	\$ 109.68	\$ 111.23	\$ 116.85	\$ 120.67
2001	\$ 119.33	\$ 118.79	\$ 123.51	\$ 120.77	\$ 117.94	\$ 120.73	\$ 113.27	\$ 111.30	\$ 114.10	\$ 110.61	\$ 106.66	\$ 115.16
2002	\$ 114.63	\$ 117.75	\$ 112.21	\$ 107.71	\$ 106.44	\$ 98.05	\$ 98.50	\$ 97.15	\$ 98.41	\$ 99.17	\$ 101.10	\$ 101.10
2003	\$ 103.13	\$ 105.97	\$ 105.18	\$ 107.42	\$ 104.81	\$ 107.57	\$ 109.78	\$ 111.40	\$ 112.76	\$ 116.75	\$ 117.24	\$ 122.07
2004	\$ 117.29	\$ 123.46	\$ 128.08	\$ 128.65	\$ 133.47	\$ 136.41	\$ 143.22	\$ 147.56	\$ 142.04	\$ 138.24	\$ 142.40	\$ 134.77
2005	\$ 138.21	\$ 141.31	\$ 147.90	\$ 153.17	\$ 152.68	\$ 149.08	\$ 139.77	\$ 139.16	\$ 140.02	\$ 141.30	\$ 139.07	\$ 143.45
2006	\$ 149.65	\$ 153.92	\$ 147.44	\$ 138.13	\$ 137.15	\$ 135.67	\$ 132.79	\$ 136.28	\$ 141.22	\$ 132.03	\$ 127.55	\$ 126.96
2007	\$ 121.72	\$ 130.25	\$ 133.11	\$ 133.40	\$ 130.49	\$ 127.34	\$ 133.14	\$ 133.85	\$ 130.75	\$ 126.24	\$ 124.55	\$ 124.72
2008	\$ 119.16	\$ 126.14	\$ 121.36	\$ 115.71	\$ 118.97	\$ 115.50	\$ 112.67	\$ 115.11	\$ 117.31	\$ 111.77	\$ 110.89	\$ 103.38
10-yr avg	\$ 118.93	\$ 123.07	\$ 123.84	\$ 122.44	\$ 120.98	\$ 120.11	\$ 120.32	\$ 120.87	\$ 120.46	\$ 118.69	\$ 118.54	\$ 119.95
5-yr avg	\$ 129.21	\$ 135.02	\$ 135.58	\$ 133.81	\$ 134.55	\$ 132.80	\$ 132.32	\$ 134.39	\$ 134.27	\$ 129.92	\$ 128.89	\$ 126.66
Std. Dev.	\$ 14.13	\$ 12.57	\$ 11.80	\$ 13.68	\$ 12.20	\$ 12.40	\$ 11.85	\$ 11.96	\$ 10.51	\$ 11.69	\$ 12.56	\$ 14.95
CV	11.88%	10.21%	9.53%	11.17%	10.09%	10.33%	9.85%	9.89%	8.72%	9.84%	10.59%	12.46%
+1SD	\$ 143.33	\$ 147.59	\$ 147.38	\$ 147.49	\$ 146.75	\$ 145.20	\$ 144.16	\$ 146.35	\$ 144.77	\$ 141.60	\$ 141.45	\$ 141.60
-1SD	\$ 115.08	\$ 122.44	\$ 123.78	\$ 120.14	\$ 122.35	\$ 120.40	\$ 120.47	\$ 122.44	\$ 123.76	\$ 118.23	\$ 116.33	\$ 111.71

Georgia Steer Prices 400-500 Pounds

years	Jan	Feb	Mar	Apr	May	Jun	Jul	Aug	Sep	Oct	Nov	Dec
1990	\$ 96.13	\$ 101.50	\$ 106.50	\$ 105.25	\$ 103.50	\$ 102.00	\$ 99.33	\$ 103.88	\$ 100.20	\$ 99.88	\$ 102.50	\$ 106.00
1991	\$ 105.31	\$ 112.13	\$ 115.85	\$ 115.19	\$ 111.00	\$ 109.10	\$ 106.17	\$ 100.05	\$ 98.75	\$ 94.81	\$ 93.88	\$ 90.83
1992	\$ 89.79	\$ 94.96	\$ 97.75	\$ 96.25	\$ 91.54	\$ 90.39	\$ 92.00	\$ 92.65	\$ 91.13	\$ 86.88	\$ 88.95	\$ 86.94
1993	\$ 96.81	\$ 100.77	\$ 105.25	\$ 105.24	\$ 101.59	\$ 100.21	\$ 97.45	\$ 95.44	\$ 95.10	\$ 93.70	\$ 92.27	\$ 94.25
1994	\$ 96.45	\$ 100.07	\$ 103.89	\$ 98.69	\$ 89.28	\$ 84.19	\$ 83.91	\$ 82.71	\$ 80.66	\$ 78.68	\$ 80.25	\$ 82.02
1995	\$ 86.46	\$ 84.83	\$ 81.83	\$ 79.04	\$ 71.75	\$ 70.04	\$ 64.85	\$ 64.97	\$ 61.11	\$ 60.33	\$ 58.94	\$ 58.58
1996	\$ 56.13	\$ 57.56	\$ 57.60	\$ 50.95	\$ 48.56	\$ 50.09	\$ 51.65	\$ 56.16	\$ 58.22	\$ 56.44	\$ 59.72	\$ 61.13
1997	\$ 70.60	\$ 78.16	\$ 85.63	\$ 85.63	\$ 87.16	\$ 85.77	\$ 92.08	\$ 88.86	\$ 86.44	\$ 84.69	\$ 82.64	\$ 86.19
1998	\$ 88.72	\$ 92.94	\$ 93.96	\$ 94.66	\$ 87.96	\$ 78.25	\$ 72.52	\$ 71.62	\$ 69.38	\$ 71.82	\$ 75.40	\$ 78.96
1999	\$ 82.05	\$ 86.93	\$ 85.66	\$ 86.74	\$ 84.65	\$ 86.00	\$ 86.98	\$ 84.90	\$ 85.44	\$ 87.55	\$ 88.47	\$ 96.44
2000	\$ 101.44	\$ 103.40	\$ 108.67	\$ 107.99	\$ 101.25	\$ 100.84	\$ 105.35	\$ 102.98	\$ 96.49	\$ 95.62	\$ 102.22	\$ 103.30
2001	\$ 105.04	\$ 105.77	\$ 109.93	\$ 107.66	\$ 104.16	\$ 106.36	\$ 99.94	\$ 96.79	\$ 98.91	\$ 93.27	\$ 89.78	\$ 99.28
2002	\$ 98.48	\$ 101.14	\$ 100.06	\$ 94.71	\$ 90.81	\$ 84.26	\$ 83.21	\$ 82.00	\$ 83.25	\$ 84.74	\$ 85.69	\$ 87.90
2003	\$ 90.42	\$ 94.79	\$ 94.17	\$ 97.74	\$ 93.89	\$ 95.46	\$ 97.21	\$ 97.79	\$ 101.46	\$ 103.63	\$ 105.71	\$ 109.36
2004	\$ 105.97	\$ 110.25	\$ 115.61	\$ 113.23	\$ 117.82	\$ 121.90	\$ 125.52	\$ 125.82	\$ 121.80	\$ 119.31	\$ 122.36	\$ 119.51
2005	\$ 122.12	\$ 126.59	\$ 132.02	\$ 133.79	\$ 133.29	\$ 129.71	\$ 122.43	\$ 121.88	\$ 122.50	\$ 121.83	\$ 121.88	\$ 125.26
2006	\$ 131.32	\$ 135.58	\$ 129.56	\$ 121.14	\$ 121.85	\$ 121.95	\$ 118.44	\$ 121.53	\$ 123.19	\$ 114.61	\$ 109.13	\$ 110.07
2007	\$ 109.31	\$ 116.62	\$ 121.47	\$ 120.21	\$ 116.34	\$ 114.07	\$ 118.73	\$ 118.58	\$ 116.25	\$ 113.10	\$ 112.50	\$ 111.13
2008	\$ 106.83	\$ 117.05	\$ 112.86	\$ 104.70	\$ 108.55	\$ 104.18	\$ 101.66	\$ 102.51	\$ 103.01	\$ 97.61	\$ 96.15	\$ 87.68
10-yr avg	\$ 105.30	\$ 109.81	\$ 111.00	\$ 108.79	\$ 107.26	\$ 106.47	\$ 105.95	\$ 105.48	\$ 105.23	\$ 103.13	\$ 103.39	\$ 104.99
5-yr avg	\$ 115.11	\$ 121.22	\$ 122.30	\$ 118.61	\$ 119.57	\$ 118.36	\$ 117.36	\$ 118.06	\$ 117.35	\$ 113.29	\$ 112.40	\$ 110.73
Std. Dev.	\$ 11.15	\$ 9.92	\$ 8.39	\$ 10.75	\$ 9.06	\$ 9.66	\$ 9.24	\$ 9.07	\$ 8.47	\$ 9.44	\$ 10.77	\$ 14.32
CV	10.59%	9.04%	7.56%	9.88%	8.45%	9.08%	8.73%	8.60%	8.05%	9.16%	10.42%	13.64%
+1SD	\$ 126.26	\$ 131.14	\$ 130.69	\$ 129.36	\$ 128.63	\$ 128.03	\$ 126.60	\$ 127.13	\$ 125.82	\$ 122.73	\$ 123.17	\$ 125.05
-1SD	\$ 103.96	\$ 111.29	\$ 113.91	\$ 107.87	\$ 110.51	\$ 108.70	\$ 108.11	\$ 109.00	\$ 108.88	\$ 103.85	\$ 101.64	\$ 96.41

Georgia Auction Prices
500-600 Pound Steers

Year	Jan	Feb	Mar	Apr	May	Jun	Jul	Aug	Sep	Oct	Nov	Dec
1990	\$ 86.38	\$ 91.33	\$ 94.80	\$ 95.63	\$ 95.88	\$ 92.70	\$ 91.50	\$ 93.88	\$ 90.00	\$ 88.00	\$ 89.25	\$ 94.25
1991	\$ 94.13	\$ 100.50	\$ 104.45	\$ 103.38	\$ 99.63	\$ 97.80	\$ 95.33	\$ 88.35	\$ 86.69	\$ 84.31	\$ 82.13	\$ 82.17
1992	\$ 80.40	\$ 84.65	\$ 87.36	\$ 85.94	\$ 81.75	\$ 80.74	\$ 83.04	\$ 83.00	\$ 82.05	\$ 79.76	\$ 79.86	\$ 80.85
1993	\$ 85.33	\$ 88.75	\$ 92.33	\$ 94.44	\$ 91.76	\$ 90.83	\$ 89.40	\$ 87.37	\$ 86.16	\$ 84.21	\$ 83.39	\$ 84.23
1994	\$ 85.61	\$ 88.67	\$ 91.45	\$ 87.69	\$ 80.71	\$ 77.11	\$ 76.17	\$ 76.00	\$ 72.66	\$ 69.57	\$ 72.29	\$ 73.52
1995	\$ 76.99	\$ 76.31	\$ 74.30	\$ 70.85	\$ 65.02	\$ 64.18	\$ 61.31	\$ 59.60	\$ 56.90	\$ 55.74	\$ 53.21	\$ 53.59
1996	\$ 51.91	\$ 53.30	\$ 54.17	\$ 48.47	\$ 46.64	\$ 48.42	\$ 51.01	\$ 53.25	\$ 54.24	\$ 52.94	\$ 55.27	\$ 57.27
1997	\$ 65.00	\$ 72.14	\$ 78.28	\$ 78.67	\$ 79.84	\$ 79.33	\$ 83.96	\$ 80.68	\$ 78.06	\$ 76.22	\$ 74.36	\$ 77.50
1998	\$ 81.03	\$ 83.77	\$ 86.13	\$ 85.38	\$ 79.58	\$ 72.05	\$ 66.91	\$ 65.06	\$ 62.78	\$ 64.49	\$ 64.69	\$ 68.84
1999	\$ 73.60	\$ 79.27	\$ 78.27	\$ 77.74	\$ 75.78	\$ 76.88	\$ 77.61	\$ 76.42	\$ 77.10	\$ 78.05	\$ 79.20	\$ 85.33
2000	\$ 90.30	\$ 92.88	\$ 98.36	\$ 96.45	\$ 91.19	\$ 91.11	\$ 96.91	\$ 93.41	\$ 87.73	\$ 85.93	\$ 89.03	\$ 89.82
2001	\$ 92.13	\$ 93.84	\$ 97.91	\$ 96.10	\$ 94.39	\$ 95.16	\$ 90.27	\$ 88.41	\$ 87.41	\$ 82.53	\$ 79.47	\$ 86.53
2002	\$ 84.94	\$ 88.56	\$ 88.34	\$ 83.30	\$ 80.17	\$ 75.96	\$ 75.04	\$ 74.48	\$ 75.94	\$ 75.99	\$ 76.77	\$ 77.86
2003	\$ 79.71	\$ 83.18	\$ 82.69	\$ 86.21	\$ 84.08	\$ 85.84	\$ 87.38	\$ 88.37	\$ 92.24	\$ 92.60	\$ 94.21	\$ 96.53
2004	\$ 94.98	\$ 96.47	\$ 102.91	\$ 101.71	\$ 107.21	\$ 110.98	\$ 113.78	\$ 114.46	\$ 109.67	\$ 106.36	\$ 107.63	\$ 106.80
2005	\$ 107.88	\$ 112.07	\$ 116.95	\$ 120.22	\$ 121.29	\$ 117.53	\$ 111.54	\$ 111.04	\$ 112.12	\$ 110.47	\$ 109.89	\$ 113.73
2006	\$ 117.71	\$ 120.61	\$ 115.86	\$ 107.84	\$ 110.79	\$ 112.65	\$ 111.33	\$ 112.09	\$ 113.51	\$ 103.50	\$ 95.59	\$ 97.49
2007	\$ 94.90	\$ 102.70	\$ 108.68	\$ 109.80	\$ 108.75	\$ 106.62	\$ 110.88	\$ 110.51	\$ 109.11	\$ 104.32	\$ 100.04	\$ 101.11
2008	\$ 98.19	\$ 107.98	\$ 104.03	\$ 95.91	\$ 102.66	\$ 99.01	\$ 98.40	\$ 99.08	\$ 97.08	\$ 87.95	\$ 85.78	\$ 79.62
10-yr avg	\$ 93.43	\$ 97.76	\$ 99.40	\$ 97.53	\$ 97.63	\$ 97.17	\$ 97.31	\$ 96.83	\$ 96.19	\$ 92.77	\$ 91.76	\$ 93.48
5-yr avg	\$ 102.73	\$ 107.97	\$ 109.69	\$ 107.10	\$ 110.14	\$ 109.36	\$ 109.19	\$ 109.44	\$ 108.30	\$ 102.52	\$ 99.79	\$ 99.75

Std. Dev.	\$ 9.91	\$ 9.17	\$ 6.51	\$ 9.14	\$ 6.91	\$ 6.98	\$ 6.13	\$ 5.98	\$ 6.52	\$ 8.58	\$ 9.72	\$ 12.82
CV	10.61%	9.38%	6.55%	9.37%	7.08%	7.18%	6.30%	6.18%	6.78%	9.25%	10.59%	13.71%
+1SD	\$ 112.64	\$ 117.14	\$ 116.20	\$ 116.24	\$ 117.05	\$ 116.34	\$ 115.32	\$ 115.42	\$ 114.82	\$ 111.10	\$ 109.50	\$ 112.57
-1SD	\$ 92.82	\$ 98.79	\$ 103.17	\$ 97.95	\$ 103.23	\$ 102.38	\$ 103.05	\$ 103.45	\$ 101.78	\$ 93.94	\$ 90.07	\$ 86.93

Georgia Auction Prices 600-700 Pound Steers

Year	Jan	Feb	Mar	Apr	May	Jun	Jul	Aug	Sep	Oct	Nov	Dec
1990	\$ 79.33	\$ 82.00	\$ 82.80	\$ 86.50	\$ 86.00	\$ 87.50	\$ 86.00	\$ 89.00	\$ 85.20	\$ 83.25	\$ 81.50	\$ 84.50
1991	\$ 85.81	\$ 92.06	\$ 92.55	\$ 91.63	\$ 88.25	\$ 87.55	\$ 86.33	\$ 81.30	\$ 79.75	\$ 78.81	\$ 75.94	\$ 75.42
1992	\$ 73.84	\$ 77.86	\$ 78.67	\$ 77.04	\$ 74.53	\$ 74.85	\$ 77.10	\$ 78.06	\$ 76.51	\$ 74.43	\$ 74.38	\$ 75.00
1993	\$ 79.13	\$ 81.25	\$ 82.81	\$ 84.58	\$ 83.60	\$ 83.83	\$ 83.26	\$ 82.29	\$ 81.41	\$ 77.83	\$ 75.47	\$ 76.67
1994	\$ 78.53	\$ 79.74	\$ 81.31	\$ 79.33	\$ 73.21	\$ 71.43	\$ 71.01	\$ 71.49	\$ 68.04	\$ 64.75	\$ 66.41	\$ 67.34
1995	\$ 70.47	\$ 69.03	\$ 67.07	\$ 63.87	\$ 60.88	\$ 60.42	\$ 57.71	\$ 57.12	\$ 54.81	\$ 53.13	\$ 52.19	\$ 52.69
1996	\$ 50.35	\$ 50.19	\$ 50.80	\$ 45.98	\$ 44.38	\$ 48.15	\$ 51.20	\$ 52.90	\$ 53.34	\$ 51.53	\$ 52.99	\$ 53.94
1997	\$ 61.75	\$ 65.46	\$ 68.99	\$ 70.27	\$ 73.02	\$ 73.19	\$ 76.90	\$ 75.33	\$ 71.76	\$ 70.61	\$ 68.20	\$ 70.23
1998	\$ 72.49	\$ 74.20	\$ 74.99	\$ 76.17	\$ 72.58	\$ 68.17	\$ 62.72	\$ 62.34	\$ 58.78	\$ 60.30	\$ 60.24	\$ 61.40
1999	\$ 64.95	\$ 69.10	\$ 69.25	\$ 69.34	\$ 68.29	\$ 70.88	\$ 72.13	\$ 71.60	\$ 72.56	\$ 72.19	\$ 72.69	\$ 76.58
2000	\$ 80.57	\$ 82.18	\$ 86.84	\$ 84.71	\$ 82.20	\$ 83.66	\$ 88.08	\$ 86.04	\$ 80.39	\$ 79.06	\$ 81.14	\$ 81.75
2001	\$ 82.94	\$ 83.22	\$ 86.14	\$ 86.84	\$ 85.85	\$ 87.05	\$ 84.04	\$ 82.70	\$ 81.48	\$ 75.69	\$ 73.56	\$ 77.05
2002	\$ 76.38	\$ 78.33	\$ 78.63	\$ 75.36	\$ 73.64	\$ 69.90	\$ 70.86	\$ 70.62	\$ 71.41	\$ 71.14	\$ 71.19	\$ 72.28
2003	\$ 73.88	\$ 74.36	\$ 74.28	\$ 76.42	\$ 75.83	\$ 78.61	\$ 81.38	\$ 83.50	\$ 86.93	\$ 87.27	\$ 88.18	\$ 88.75
2004	\$ 85.99	\$ 87.28	\$ 92.36	\$ 92.35	\$ 98.81	\$ 103.86	\$ 107.25	\$ 108.07	\$ 103.46	\$ 98.62	\$ 100.26	\$ 97.07
2005	\$ 98.61	\$ 100.01	\$ 105.47	\$ 109.33	\$ 111.54	\$ 107.90	\$ 103.58	\$ 103.89	\$ 104.71	\$ 104.01	\$ 102.84	\$ 106.56
2006	\$ 108.12	\$ 107.94	\$ 105.30	\$ 98.67	\$ 101.21	\$ 103.66	\$ 105.78	\$ 105.05	\$ 104.61	\$ 97.08	\$ 88.11	\$ 89.25
2007	\$ 86.31	\$ 91.07	\$ 99.86	\$ 102.33	\$ 101.65	\$ 98.92	\$ 103.39	\$ 105.67	\$ 104.20	\$ 97.95	\$ 93.88	\$ 93.61
2008	\$ 91.07	\$ 99.53	\$ 95.15	\$ 90.37	\$ 97.23	\$ 94.55	\$ 96.02	\$ 97.29	\$ 94.58	\$ 83.72	\$ 79.85	\$ 73.54
10-yr avg	\$ 84.88	\$ 87.30	\$ 89.33	\$ 88.57	\$ 89.62	\$ 89.90	\$ 91.25	\$ 91.44	\$ 90.43	\$ 86.67	\$ 85.17	\$ 85.64
5-yr avg	\$ 94.02	\$ 97.17	\$ 99.63	\$ 98.61	\$ 102.09	\$ 101.78	\$ 103.20	\$ 103.99	\$ 102.31	\$ 96.28	\$ 92.99	\$ 92.01
Std. Dev.	\$ 9.39	\$ 8.14	\$ 5.90	\$ 7.68	\$ 5.58	\$ 5.14	\$ 4.32	\$ 4.05	\$ 4.35	\$ 7.52	\$ 9.32	\$ 12.13
CV	11.06%	9.32%	6.60%	8.67%	6.23%	5.72%	4.74%	4.42%	4.81%	8.68%	10.94%	14.16%
+1SD	\$ 103.41	\$ 105.30	\$ 105.53	\$ 106.29	\$ 107.67	\$ 106.92	\$ 107.53	\$ 108.04	\$ 106.66	\$ 103.80	\$ 102.30	\$ 104.14
-1SD	\$ 84.63	\$ 89.03	\$ 93.73	\$ 90.93	\$ 96.51	\$ 96.64	\$ 98.88	\$ 99.95	\$ 97.96	\$ 88.75	\$ 83.67	\$ 79.87

**Georgia Auction Prices
700-800 Pound Steers**

Year	Jan	Feb	Mar	Apr	May	Jun	Jul	Aug	Sep	Oct	Nov	Dec
1990	\$ 74.00	\$ 78.00	\$ 78.80	\$ 82.50	\$ 82.00	\$ 83.60	\$ 82.00	\$ 85.13	\$ 81.50	\$ 79.25	\$ 77.50	\$ 80.50
1991	\$ 82.25	\$ 88.00	\$ 88.60	\$ 84.25	\$ 81.81	\$ 80.05	\$ 79.42	\$ 75.35	\$ 74.63	\$ 72.69	\$ 73.25	\$ 71.38
1992	\$ 70.35	\$ 74.19	\$ 72.70	\$ 71.95	\$ 70.41	\$ 71.68	\$ 72.80	\$ 73.39	\$ 72.47	\$ 70.76	\$ 71.13	\$ 71.61
1993	\$ 75.93	\$ 77.17	\$ 77.78	\$ 77.87	\$ 77.48	\$ 78.01	\$ 78.67	\$ 77.35	\$ 77.24	\$ 72.56	\$ 71.11	\$ 72.06
1994	\$ 74.43	\$ 75.15	\$ 75.98	\$ 74.74	\$ 68.87	\$ 65.73	\$ 67.46	\$ 68.22	\$ 63.49	\$ 61.12	\$ 62.73	\$ 62.83
1995	\$ 67.94	\$ 66.59	\$ 63.30	\$ 59.58	\$ 57.12	\$ 56.69	\$ 54.30	\$ 55.45	\$ 53.09	\$ 52.90	\$ 51.85	\$ 52.39
1996	\$ 49.08	\$ 49.61	\$ 49.67	\$ 44.83	\$ 43.85	\$ 47.69	\$ 51.09	\$ 52.50	\$ 53.01	\$ 50.50	\$ 51.78	\$ 52.68
1997	\$ 59.91	\$ 62.18	\$ 63.41	\$ 66.08	\$ 68.83	\$ 70.01	\$ 72.72	\$ 71.31	\$ 67.84	\$ 67.40	\$ 63.98	\$ 66.35
1998	\$ 68.36	\$ 68.46	\$ 68.39	\$ 70.25	\$ 67.58	\$ 63.63	\$ 59.50	\$ 59.35	\$ 55.24	\$ 57.16	\$ 55.58	\$ 57.81
1999	\$ 61.32	\$ 64.96	\$ 64.00	\$ 63.69	\$ 62.81	\$ 66.09	\$ 66.60	\$ 67.40	\$ 67.80	\$ 67.89	\$ 67.54	\$ 71.02
2000	\$ 73.90	\$ 75.60	\$ 78.21	\$ 77.92	\$ 74.22	\$ 75.66	\$ 78.02	\$ 76.84	\$ 74.21	\$ 73.72	\$ 76.14	\$ 76.06
2001	\$ 77.56	\$ 77.81	\$ 78.81	\$ 79.38	\$ 78.02	\$ 80.91	\$ 78.95	\$ 77.64	\$ 77.32	\$ 72.03	\$ 69.93	\$ 70.89
2002	\$ 71.38	\$ 73.97	\$ 73.13	\$ 68.20	\$ 67.32	\$ 65.76	\$ 67.76	\$ 67.58	\$ 67.50	\$ 68.10	\$ 68.35	\$ 68.91
2003	\$ 70.58	\$ 70.41	\$ 69.76	\$ 71.14	\$ 71.59	\$ 73.03	\$ 75.86	\$ 78.16	\$ 82.50	\$ 83.23	\$ 82.89	\$ 84.05
2004	\$ 81.92	\$ 81.18	\$ 84.20	\$ 84.08	\$ 91.14	\$ 96.29	\$ 99.96	\$ 101.74	\$ 96.46	\$ 92.67	\$ 94.65	\$ 90.67
2005	\$ 92.14	\$ 92.69	\$ 93.66	\$ 101.28	\$ 101.70	\$ 99.72	\$ 96.16	\$ 96.15	\$ 98.74	\$ 97.69	\$ 96.13	\$ 100.46
2006	\$ 102.56	\$ 100.96	\$ 93.24	\$ 88.77	\$ 92.33	\$ 96.06	\$ 96.41	\$ 100.42	\$ 99.77	\$ 90.68	\$ 82.91	\$ 83.83
2007	\$ 79.66	\$ 86.44	\$ 90.87	\$ 93.39	\$ 93.81	\$ 90.42	\$ 97.27	\$ 98.25	\$ 96.43	\$ 91.03	\$ 87.32	\$ 88.34
2008	\$ 84.41	\$ 91.84	\$ 88.47	\$ 86.28	\$ 91.00	\$ 91.38	\$ 91.85	\$ 92.25	\$ 90.59	\$ 79.63	\$ 73.03	\$ 70.76
10-yr avg	\$ 79.54	\$ 81.58	\$ 81.44	\$ 81.41	\$ 82.39	\$ 83.53	\$ 84.88	\$ 85.64	\$ 85.13	\$ 81.67	\$ 79.89	\$ 80.50
5-yr avg	\$ 88.14	\$ 90.62	\$ 90.09	\$ 90.76	\$ 94.00	\$ 94.77	\$ 96.33	\$ 97.76	\$ 96.40	\$ 90.34	\$ 86.81	\$ 86.81
Std. Dev.	\$ 9.33	\$ 7.41	\$ 3.89	\$ 6.82	\$ 4.45	\$ 3.84	\$ 2.92	\$ 3.74	\$ 3.56	\$ 6.61	\$ 9.40	\$ 10.84
CV	11.73%	9.08%	4.78%	8.38%	5.41%	4.59%	3.44%	4.37%	4.18%	8.09%	11.77%	13.47%
+1SD	\$ 97.47	\$ 98.03	\$ 93.98	\$ 97.58	\$ 98.45	\$ 98.61	\$ 99.25	\$ 101.50	\$ 99.96	\$ 96.95	\$ 96.21	\$ 97.65
-1SD	\$ 78.80	\$ 83.22	\$ 86.20	\$ 83.94	\$ 89.54	\$ 90.94	\$ 93.41	\$ 94.02	\$ 92.84	\$ 83.73	\$ 77.40	\$ 75.97

Georgia Auction Prices 400-500 Pound Heifers

Year	Jan	Feb	Mar	Apr	May	Jun	Jul	Aug	Sep	Oct	Nov	Dec
1990	\$82.75	\$88.00	\$93.10	\$93.75	\$92.13	\$92.10	\$89.67	\$92.13	\$89.50	\$86.63	\$89.63	\$94.25
1991	\$94.13	\$99.00	\$103.85	\$103.94	\$100.56	\$99.80	\$96.08	\$90.00	\$87.31	\$86.69	\$84.50	\$83.67
1992	\$81.04	\$84.79	\$86.16	\$85.55	\$82.31	\$81.47	\$82.17	\$83.29	\$81.94	\$78.68	\$80.14	\$79.82
1993	\$85.05	\$86.58	\$90.33	\$91.20	\$89.60	\$90.88	\$88.88	\$86.25	\$84.57	\$82.63	\$80.97	\$82.79
1994	\$83.36	\$87.13	\$88.86	\$86.93	\$80.28	\$77.55	\$76.53	\$74.96	\$70.97	\$68.60	\$71.29	\$71.81
1995	\$74.39	\$74.55	\$71.23	\$69.08	\$64.27	\$63.24	\$58.30	\$57.05	\$52.95	\$51.44	\$49.52	\$49.75
1996	\$47.37	\$46.94	\$47.69	\$42.53	\$41.03	\$42.41	\$43.42	\$47.21	\$48.19	\$46.05	\$48.66	\$49.94
1997	\$56.92	\$63.39	\$71.51	\$74.34	\$76.23	\$77.28	\$81.87	\$77.23	\$74.56	\$73.31	\$70.65	\$73.38
1998	\$75.34	\$77.19	\$80.21	\$81.53	\$75.35	\$70.19	\$64.36	\$63.18	\$60.20	\$61.76	\$62.18	\$65.61
1999	\$68.95	\$75.28	\$74.76	\$77.10	\$74.73	\$76.43	\$77.44	\$76.21	\$75.90	\$76.06	\$77.02	\$83.09
2000	\$89.91	\$93.27	\$98.58	\$99.29	\$94.14	\$91.39	\$95.83	\$92.97	\$87.51	\$87.49	\$91.41	\$93.10
2001	\$94.48	\$94.86	\$99.46	\$98.11	\$95.66	\$97.78	\$92.25	\$88.58	\$87.15	\$82.97	\$79.03	\$85.03
2002	\$85.73	\$89.02	\$87.14	\$81.81	\$81.03	\$77.15	\$75.90	\$75.34	\$74.94	\$74.69	\$76.52	\$77.29
2003	\$79.98	\$82.29	\$81.54	\$84.61	\$84.05	\$86.34	\$87.61	\$87.91	\$89.85	\$91.97	\$94.23	\$97.54
2004	\$95.43	\$98.15	\$104.38	\$104.79	\$108.93	\$112.68	\$117.07	\$115.90	\$112.16	\$109.67	\$109.78	\$109.74
2005	\$112.02	\$117.71	\$121.19	\$124.97	\$126.62	\$123.45	\$114.67	\$113.76	\$113.36	\$110.99	\$112.40	\$115.23
2006	\$ 119.73	\$ 125.91	\$ 121.46	\$ 114.28	\$ 115.66	\$ 113.61	\$ 110.30	\$ 110.81	\$ 112.24	\$ 104.17	\$ 97.88	\$ 98.49
2007	\$ 95.96	\$ 102.32	\$ 107.32	\$ 110.44	\$ 107.01	\$ 105.45	\$ 108.44	\$ 108.13	\$ 106.44	\$ 101.41	\$ 97.96	\$ 96.91
2008	\$ 93.95	\$ 103.12	\$ 98.97	\$ 94.23	\$ 99.19	\$ 94.57	\$ 93.12	\$ 93.61	\$ 92.56	\$ 85.44	\$ 82.13	\$ 77.17
10-yr avg	\$93.61	\$98.19	\$99.48	\$98.96	\$98.70	\$97.88	\$97.26	\$96.32	\$95.21	\$92.49	\$91.83	\$93.36
5-yr avg	\$103.42	\$109.44	\$110.67	\$109.74	\$111.48	\$109.95	\$108.72	\$108.44	\$107.35	\$102.34	\$100.03	\$99.51

Std. Dev.	\$ 11.72	\$ 11.81	\$ 10.18	\$ 11.38	\$ 10.30	\$ 10.72	\$ 9.37	\$ 8.80	\$ 8.70	\$ 10.23	\$ 12.01	\$ 14.65
CV	12.52%	12.03%	10.24%	11.50%	10.43%	10.95%	9.63%	9.13%	9.14%	11.06%	13.08%	15.69%
+1SD	\$ 115.13	\$ 121.25	\$ 120.85	\$ 121.12	\$ 121.78	\$ 120.67	\$ 118.09	\$ 117.24	\$ 116.05	\$ 112.56	\$ 112.04	\$ 114.16
-1SD	\$ 91.70	\$ 97.63	\$ 100.48	\$ 98.36	\$ 101.19	\$ 99.23	\$ 99.35	\$ 99.64	\$ 98.65	\$ 92.11	\$ 88.02	\$ 84.86

Georgia Auction Prices 500-600 Pound Heifers

Year	Jan	Feb	Mar	Apr	May	Jun	Jul	Aug	Sep	Oct	Nov	Dec
1990	\$78.88	\$81.17	\$84.70	\$86.13	\$86.38	\$87.00	\$85.50	\$87.00	\$84.30	\$82.50	\$80.63	\$86.25
1991	\$84.94	\$89.94	\$93.75	\$95.00	\$91.88	\$90.30	\$87.00	\$82.25	\$79.94	\$79.50	\$78.19	\$77.92
1992	\$74.48	\$78.13	\$79.22	\$78.50	\$76.83	\$76.02	\$77.79	\$77.73	\$77.50	\$75.02	\$74.97	\$75.37
1993	\$79.33	\$80.16	\$81.88	\$84.13	\$84.14	\$83.29	\$83.05	\$81.53	\$80.16	\$77.46	\$75.89	\$77.71
1994	\$77.71	\$80.00	\$82.16	\$80.67	\$74.46	\$72.49	\$72.07	\$71.28	\$67.30	\$63.35	\$65.97	\$65.85
1995	\$68.91	\$68.83	\$66.46	\$64.10	\$60.63	\$59.57	\$55.72	\$54.79	\$51.68	\$49.97	\$47.81	\$48.70
1996	\$46.24	\$45.36	\$46.24	\$40.91	\$41.14	\$43.26	\$44.97	\$47.30	\$47.70	\$46.07	\$48.55	\$49.44
1997	\$55.96	\$61.16	\$66.88	\$69.95	\$72.60	\$74.40	\$77.46	\$74.10	\$71.47	\$69.05	\$66.12	\$69.52
1998	\$71.05	\$72.38	\$75.24	\$76.78	\$71.85	\$67.96	\$62.18	\$60.40	\$57.30	\$58.04	\$57.19	\$59.81
1999	\$64.13	\$69.82	\$69.29	\$69.67	\$69.16	\$70.96	\$72.13	\$71.33	\$71.83	\$71.65	\$72.06	\$77.21
2000	\$82.05	\$84.29	\$89.25	\$88.45	\$84.75	\$84.63	\$87.57	\$85.52	\$80.88	\$80.18	\$83.17	\$84.10
2001	\$85.31	\$85.71	\$90.23	\$89.55	\$88.21	\$89.34	\$85.29	\$83.16	\$80.72	\$75.28	\$72.77	\$76.69
2002	\$76.98	\$80.16	\$80.24	\$76.27	\$74.75	\$71.72	\$71.86	\$70.98	\$71.05	\$70.66	\$71.76	\$72.98
2003	\$74.27	\$75.87	\$75.32	\$78.13	\$78.79	\$80.71	\$82.88	\$83.39	\$85.41	\$86.21	\$87.73	\$89.73
2004	\$87.60	\$88.01	\$93.84	\$94.60	\$100.42	\$105.38	\$108.55	\$109.54	\$104.22	\$99.49	\$100.65	\$98.89
2005	\$100.44	\$103.23	\$108.32	\$112.92	\$114.96	\$111.87	\$104.49	\$105.89	\$106.49	\$104.06	\$105.14	\$105.65
2006	\$ 108.87	\$ 110.85	\$ 107.13	\$ 104.59	\$ 104.47	\$ 106.29	\$ 104.50	\$ 104.31	\$ 104.85	\$ 95.92	\$ 87.16	\$ 88.28
2007	\$ 86.30	\$ 91.69	\$ 97.94	\$ 102.55	\$ 100.55	\$ 97.79	\$ 101.73	\$ 102.16	\$ 100.71	\$ 94.30	\$ 89.60	\$ 89.65
2008	\$ 86.61	\$ 95.33	\$ 92.49	\$ 87.91	\$ 93.38	\$ 90.75	\$ 89.67	\$ 91.47	\$ 88.39	\$ 78.70	\$ 77.03	\$ 71.42
10-yr avg	\$85.26	\$88.49	\$90.40	\$90.46	\$90.94	\$90.94	\$90.87	\$90.77	\$89.45	\$85.64	\$84.71	\$85.46
5-yr avg	\$93.96	\$97.82	\$99.94	\$100.51	\$102.75	\$102.41	\$101.79	\$102.67	\$100.93	\$94.49	\$91.92	\$90.78

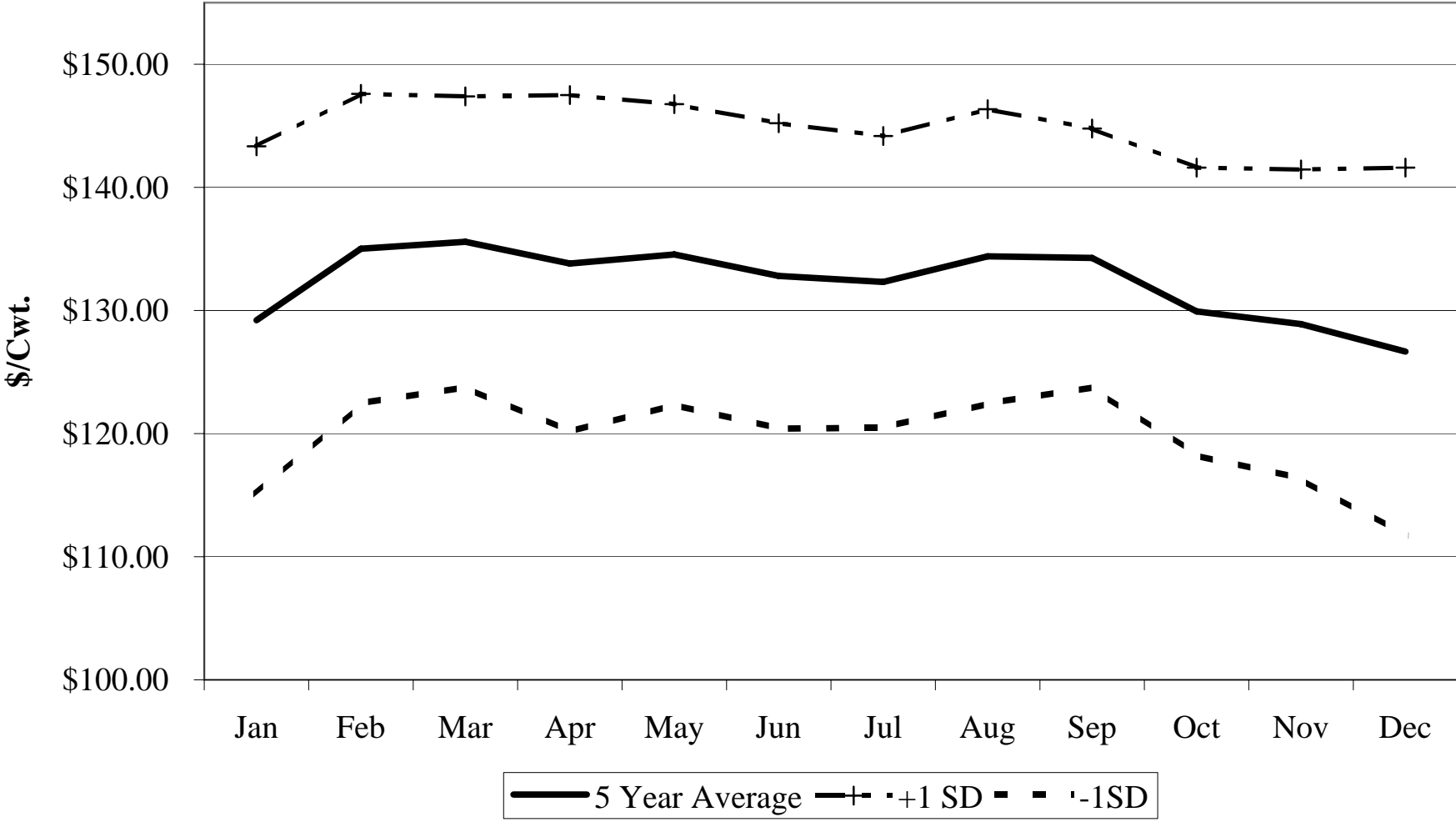
Std. Dev.	\$ 10.22	\$ 9.21	\$ 7.39	\$ 9.60	\$ 7.91	\$ 8.22	\$ 7.20	\$ 6.82	\$ 7.32	\$ 9.59	\$ 11.19	\$ 12.94
CV	11.98%	10.41%	8.18%	10.61%	8.69%	9.04%	7.92%	7.51%	8.18%	11.20%	13.21%	15.14%
+1SD	\$ 104.18	\$ 107.03	\$ 107.34	\$ 110.11	\$ 110.66	\$ 110.64	\$ 108.99	\$ 109.49	\$ 108.25	\$ 104.09	\$ 103.11	\$ 103.71
-1SD	\$ 83.75	\$ 88.61	\$ 92.55	\$ 90.91	\$ 94.85	\$ 94.19	\$ 94.59	\$ 95.86	\$ 93.61	\$ 84.90	\$ 80.73	\$ 77.84
Std. Dev.	\$ 12.75	\$ 12.70	\$ 12.89	\$ 13.54	\$ 14.86	\$ 15.25	\$ 15.39	\$ 16.26	\$ 16.21	\$ 14.18	\$ 13.90	\$ 13.15
CV	14.96%	14.35%	14.25%	14.97%	16.34%	16.77%	16.94%	17.91%	18.13%	16.56%	16.40%	15.39%

Georgia Auction Prices 600-700 Pound Heifers

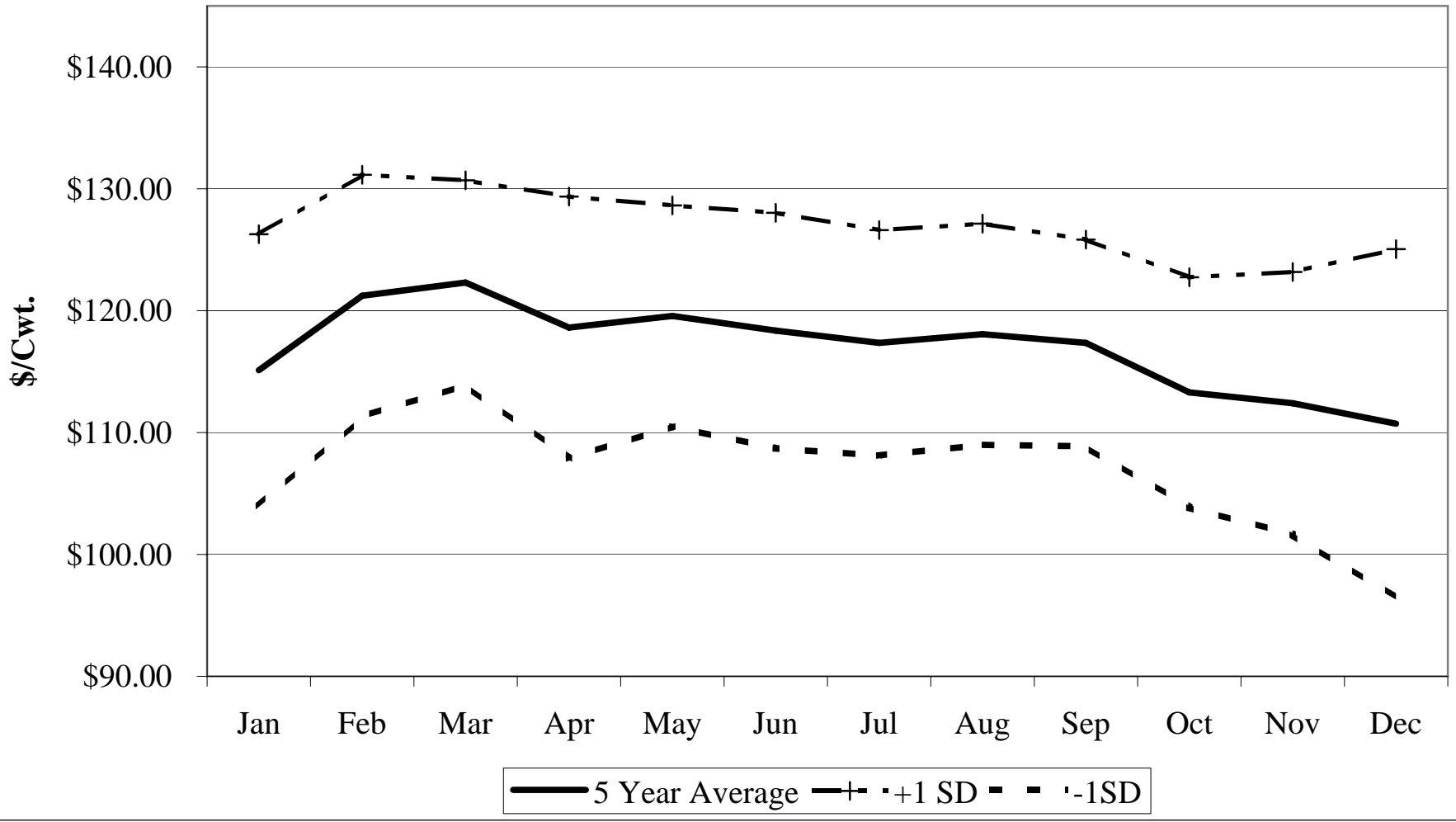
Year	Jan	Feb	Mar	Apr	May	Jun	Jul	Aug	Sep	Oct	Nov	Dec
1991	\$78.88	\$83.56	\$85.90	\$84.56	\$83.19	\$81.40	\$81.17	\$75.55	\$73.81	\$72.50	\$71.63	\$72.33
1992	\$69.42	\$73.37	\$72.62	\$72.39	\$71.73	\$71.09	\$73.56	\$73.25	\$71.87	\$71.33	\$70.21	\$70.91
1993	\$74.84	\$75.42	\$75.78	\$77.00	\$77.37	\$77.94	\$76.95	\$76.78	\$75.76	\$72.65	\$70.65	\$71.04
1994	\$73.01	\$74.23	\$76.23	\$74.07	\$68.50	\$66.19	\$67.35	\$66.91	\$62.98	\$60.49	\$61.80	\$62.29
1995	\$65.22	\$64.59	\$61.72	\$58.16	\$55.69	\$55.53	\$53.06	\$53.06	\$50.52	\$49.41	\$48.37	\$48.98
1996	\$44.78	\$44.89	\$44.91	\$40.26	\$40.66	\$43.11	\$46.35	\$48.18	\$48.28	\$46.45	\$48.71	\$48.29
1997	\$55.07	\$59.47	\$62.47	\$64.86	\$67.98	\$69.15	\$73.00	\$70.29	\$67.27	\$65.49	\$63.16	\$64.65
1998	\$67.03	\$67.84	\$69.25	\$70.03	\$67.82	\$63.72	\$59.52	\$57.53	\$54.52	\$55.94	\$54.06	\$56.21
1999	\$60.77	\$64.31	\$63.94	\$64.03	\$63.53	\$65.81	\$66.64	\$66.47	\$67.36	\$67.14	\$67.58	\$71.08
2000	\$75.39	\$76.80	\$79.83	\$80.22	\$77.21	\$77.85	\$80.05	\$79.00	\$75.41	\$74.90	\$76.14	\$77.64
2001	\$79.19	\$78.30	\$81.05	\$81.50	\$79.87	\$81.43	\$79.51	\$78.35	\$76.44	\$70.95	\$67.46	\$70.19
2002	\$71.84	\$74.90	\$72.98	\$70.30	\$69.30	\$67.35	\$66.84	\$66.45	\$67.44	\$67.62	\$68.77	\$69.77
2003	\$70.34	\$70.44	\$69.92	\$71.91	\$72.76	\$74.92	\$77.48	\$79.43	\$82.41	\$83.12	\$83.73	\$84.21
2004	\$81.68	\$82.13	\$85.33	\$86.48	\$92.75	\$99.46	\$101.30	\$103.19	\$99.27	\$92.83	\$93.26	\$91.04
2005	\$93.69	\$93.37	\$97.13	\$101.85	\$103.74	\$101.81	\$97.33	\$98.74	\$99.14	\$97.72	\$97.04	\$98.35
2006	\$ 100.23	\$ 101.46	\$ 94.81	\$ 93.91	\$ 95.59	\$ 96.18	\$ 97.49	\$ 97.29	\$ 97.54	\$ 89.97	\$ 82.69	\$ 82.82
2007	\$ 79.77	\$ 83.75	\$ 89.52	\$ 94.61	\$ 92.70	\$ 90.49	\$ 96.25	\$ 97.45	\$ 94.85	\$ 89.60	\$ 84.25	\$ 84.57
2008	\$ 77.85	\$ 87.69	\$ 86.24	\$ 82.58	\$ 88.75	\$ 87.93	\$ 87.34	\$ 88.30	\$ 85.64	\$ 74.44	\$ 72.48	\$ 66.17
10-yr avg	\$77.98	\$80.09	\$80.91	\$81.58	\$82.18	\$82.45	\$82.70	\$82.93	\$81.82	\$78.57	\$77.04	\$77.46
5-yr avg	\$83.93	\$86.47	\$87.16	\$88.56	\$91.05	\$91.80	\$92.86	\$94.07	\$93.14	\$87.95	\$85.58	\$84.53

Std. Dev.	\$ 11.00	\$ 10.55	\$ 9.64	\$ 10.57	\$ 10.27	\$ 9.79	\$ 8.84	\$ 8.65	\$ 7.31	\$ 8.15	\$ 8.67	\$ 10.71
CV	14.11%	13.18%	11.92%	12.96%	12.49%	11.88%	10.69%	10.44%	8.94%	10.37%	11.25%	13.83%
+1SD	\$ 94.93	\$ 97.03	\$ 96.80	\$ 99.13	\$ 101.31	\$ 101.59	\$ 101.71	\$ 102.72	\$ 100.45	\$ 96.09	\$ 94.24	\$ 95.24
-1SD	\$ 72.93	\$ 75.92	\$ 77.52	\$ 77.98	\$ 80.78	\$ 82.00	\$ 84.02	\$ 85.41	\$ 85.83	\$ 79.80	\$ 76.91	\$ 73.82
Std. Dev.	\$ 11.31	\$ 11.14	\$ 10.90	\$ 11.92	\$ 13.22	\$ 13.72	\$ 14.41	\$ 15.31	\$ 15.06	\$ 13.01	\$ 12.62	\$ 12.16
CV	14.50%	13.91%	13.47%	14.61%	16.09%	16.64%	17.42%	18.46%	18.40%	16.56%	16.37%	15.69%

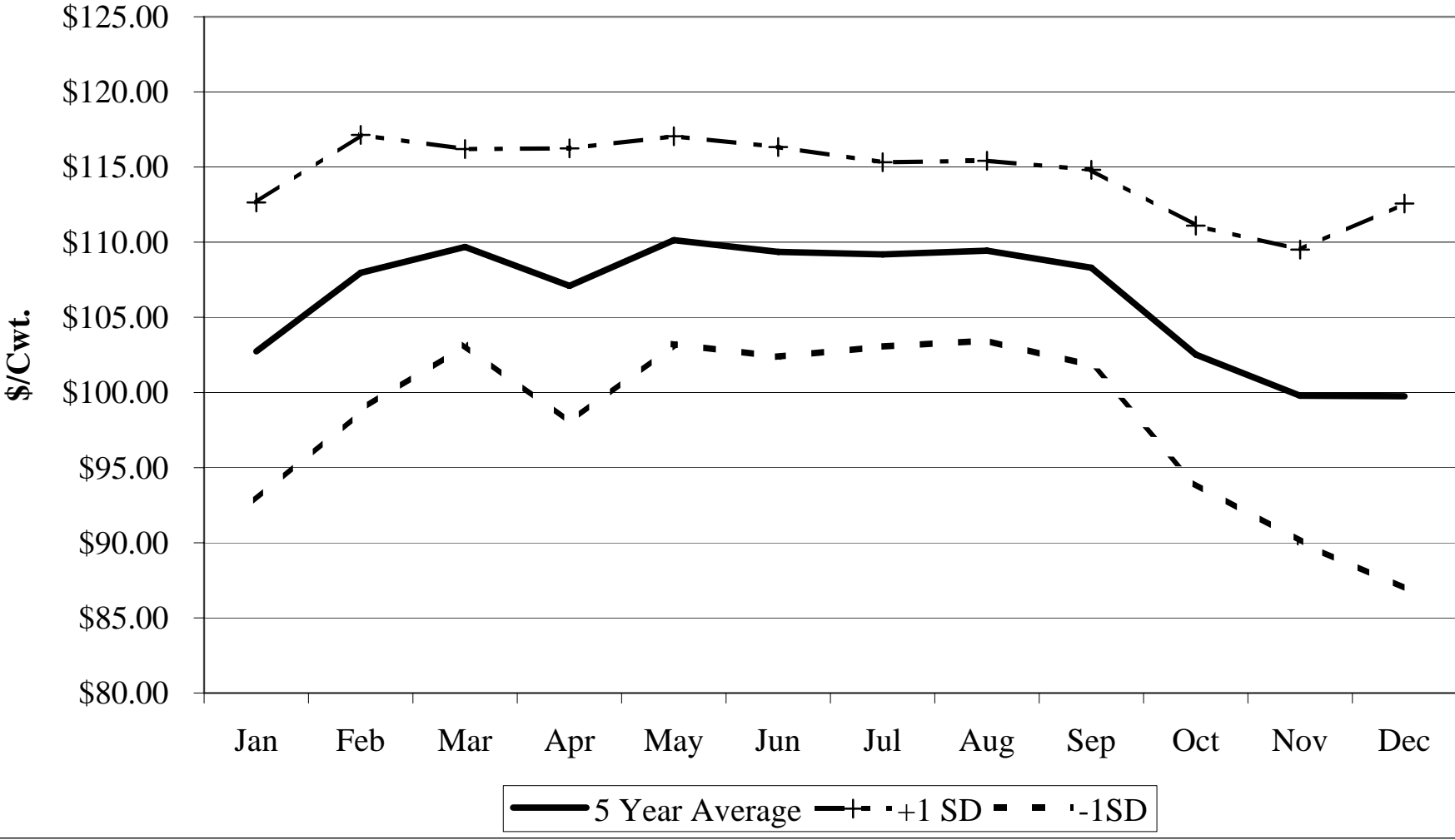
300-400 Pound Steer Prices, 2004-2008 Georgia Auction Markets



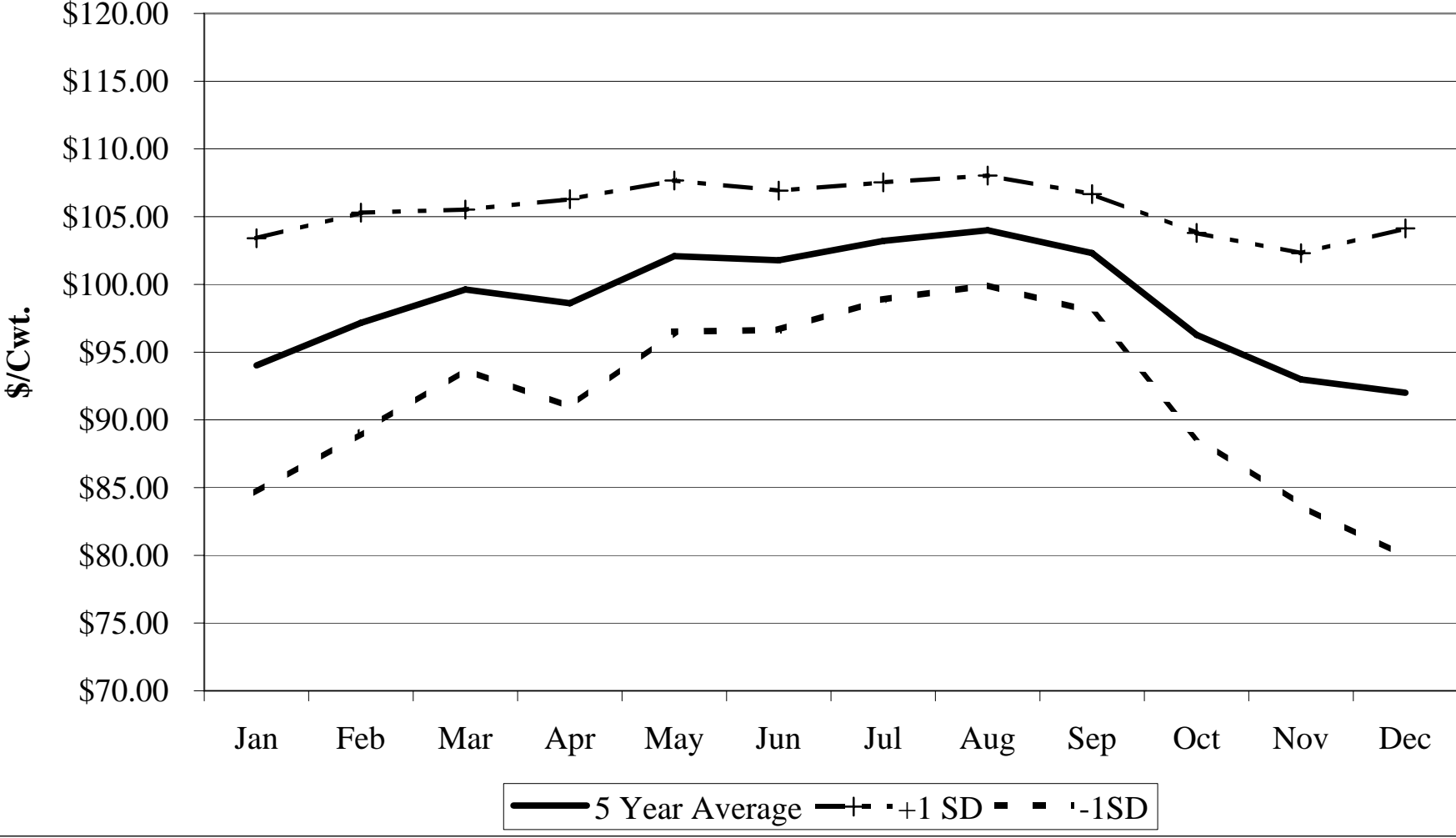
400-500 Pound Steer Prices, 2004-2008 Georgia Auction Markets



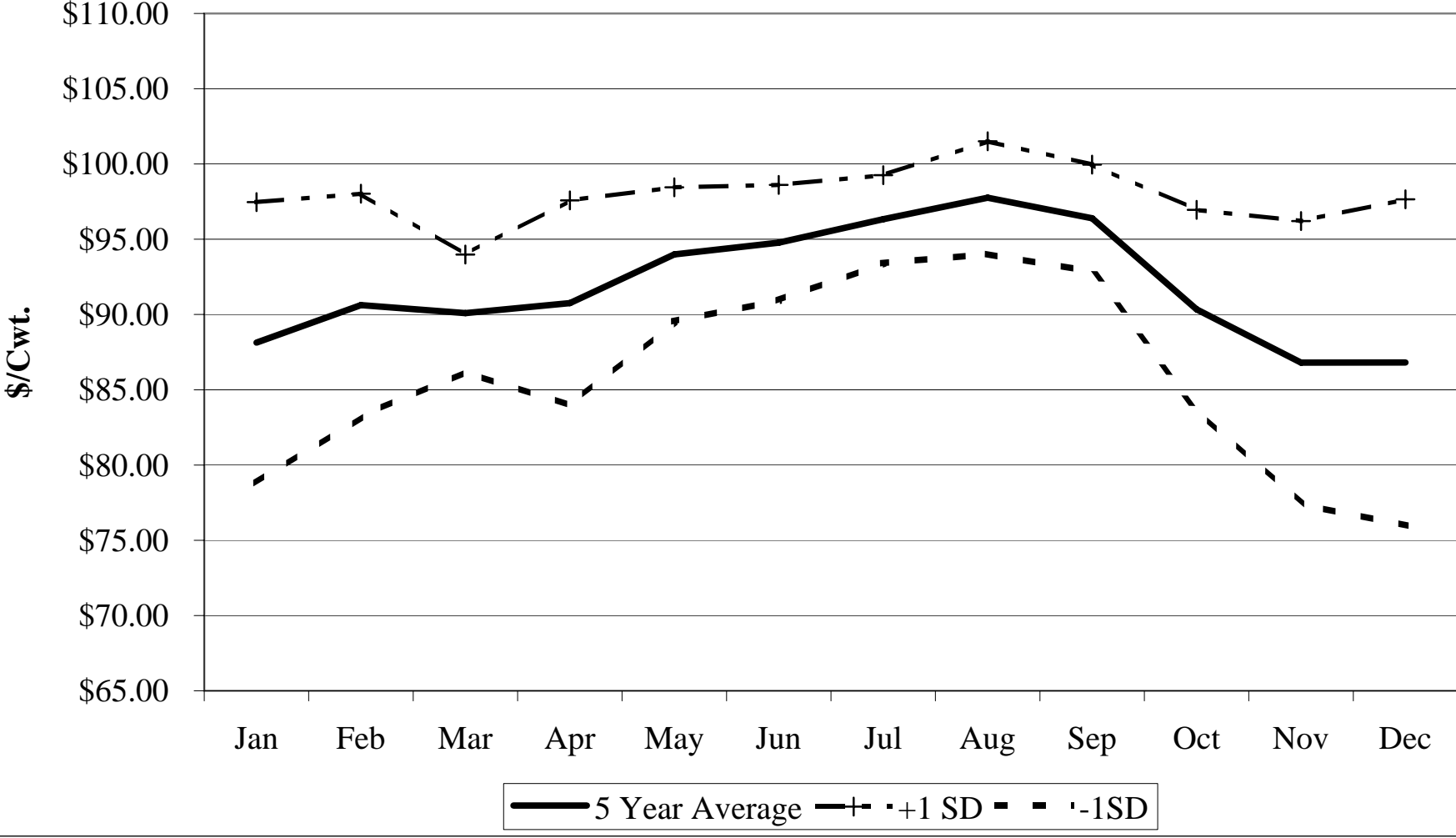
500-600 Pound Steer Prices, 2004-2008 Georgia Auction Markets



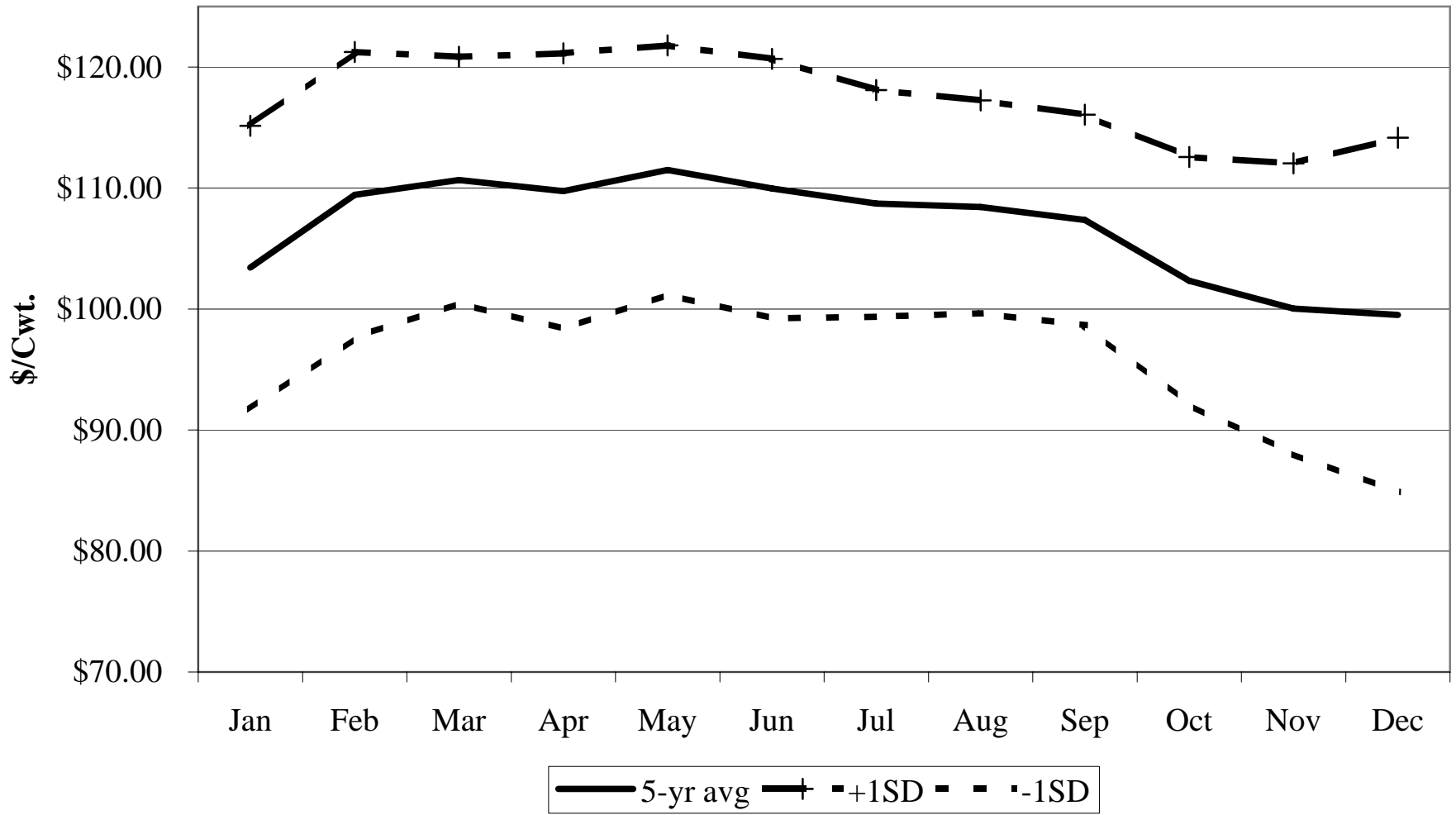
600-700 Pound Steer Prices, 2004-2008 Georgia Auction Markets



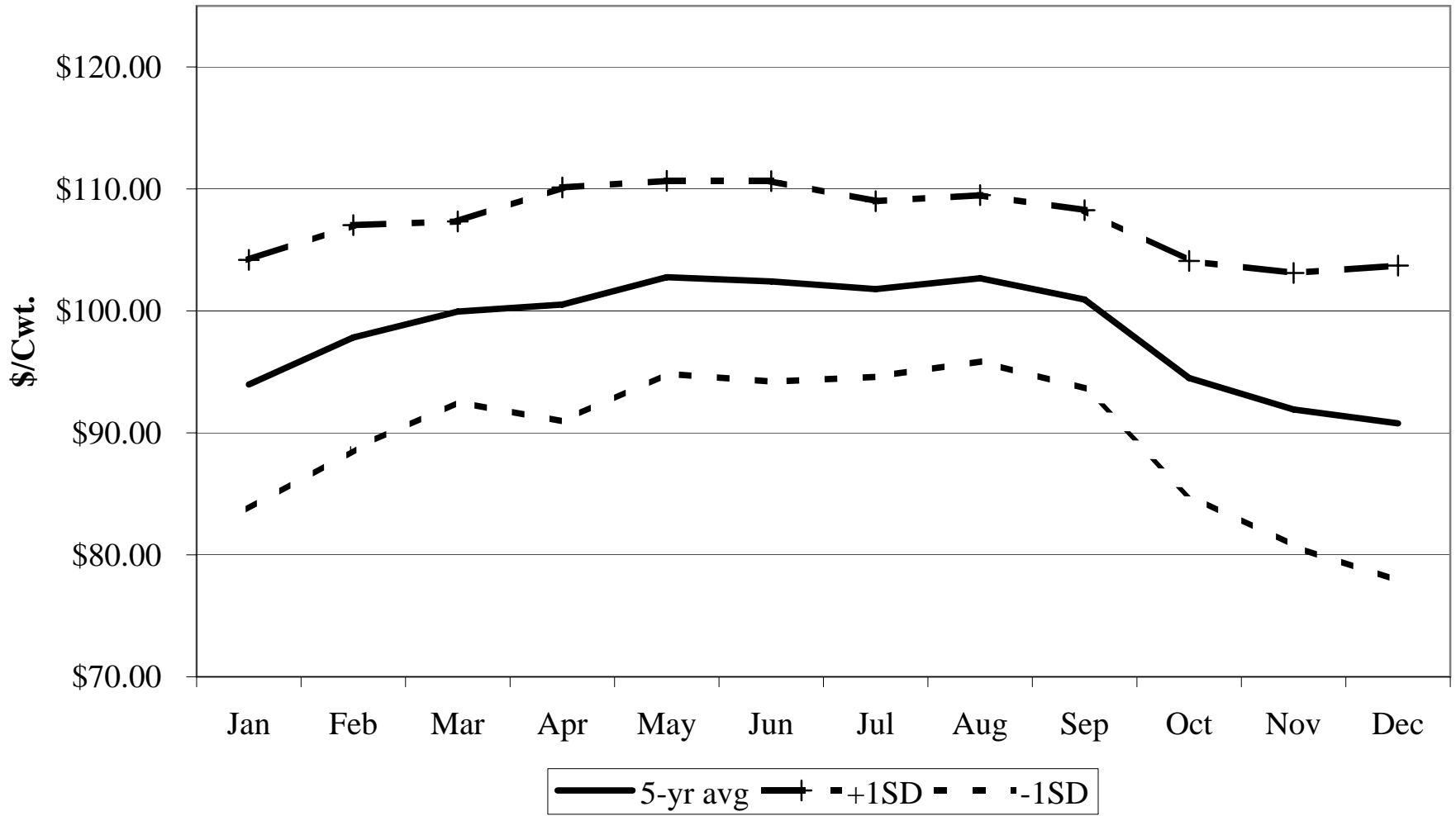
700-800 Pound Steer Prices, 2004-2008 Georgia Auction Markets



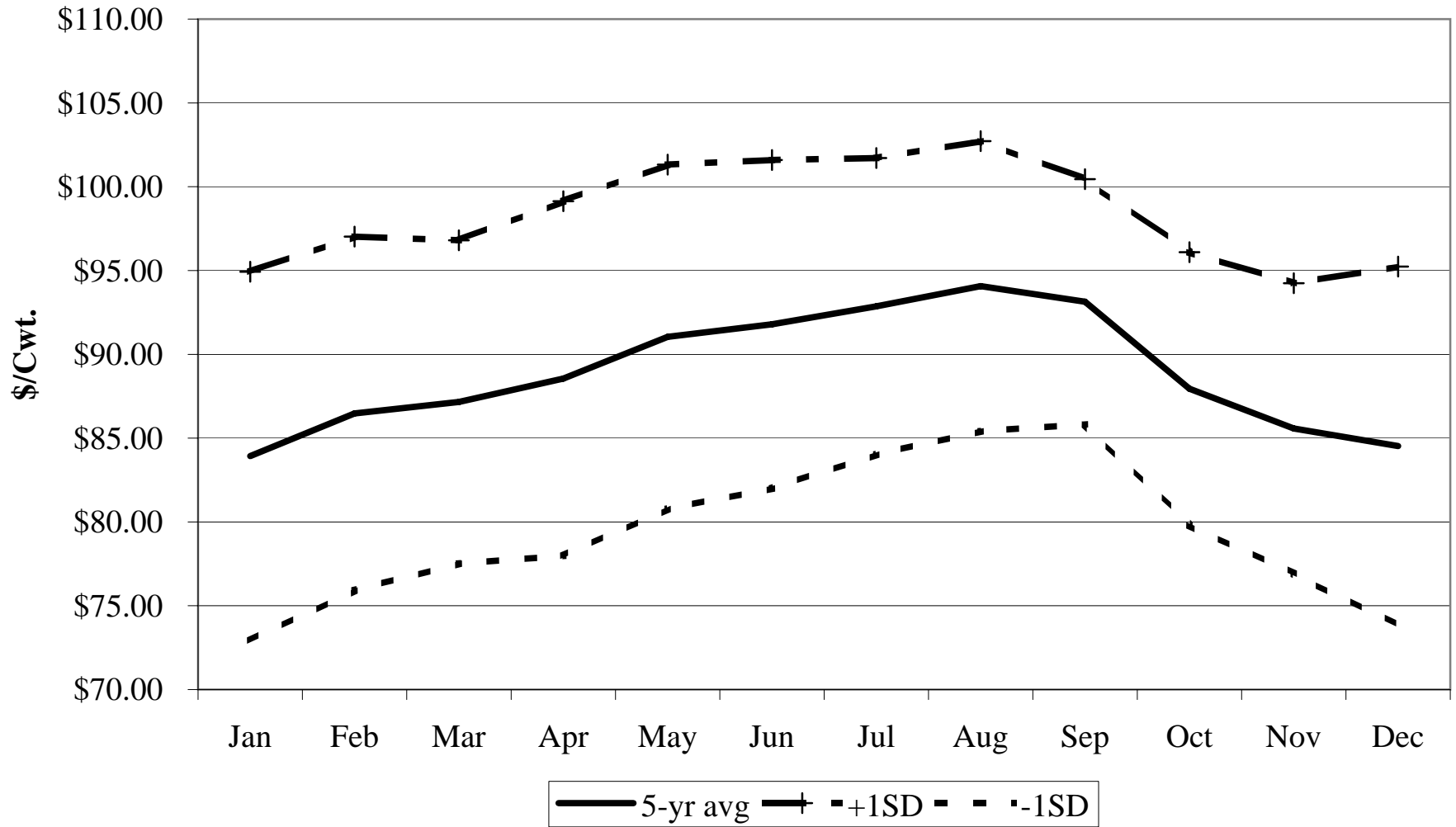
400-500 Pound Heifer Prices, 2004-2008 Georgia Auction Markets



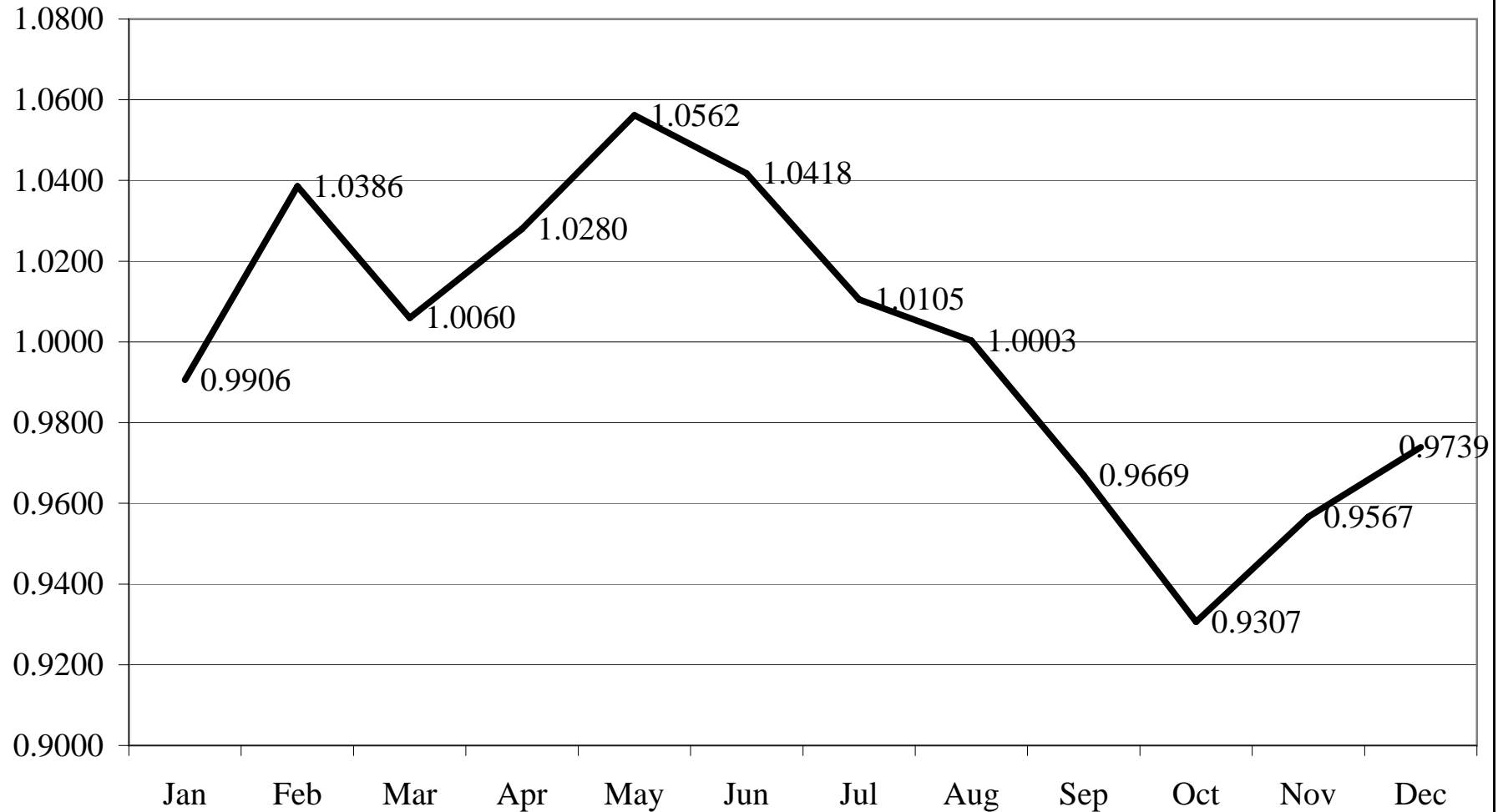
500-600 Pound Heifer Prices, 2004-2008 Georgia Auction Markets



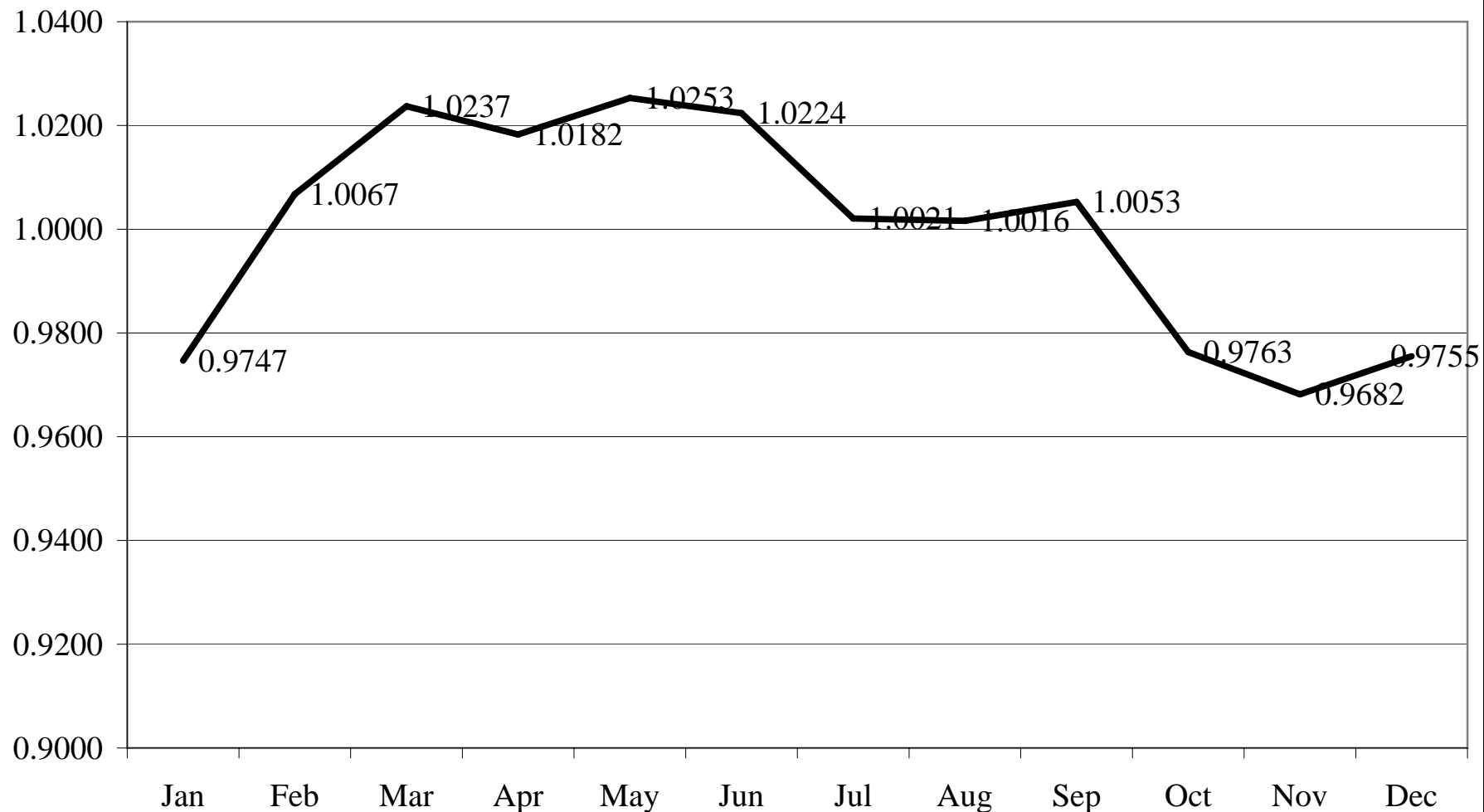
600-700 Pound Heifer Prices, 2004-2008 Georgia Auction Markets



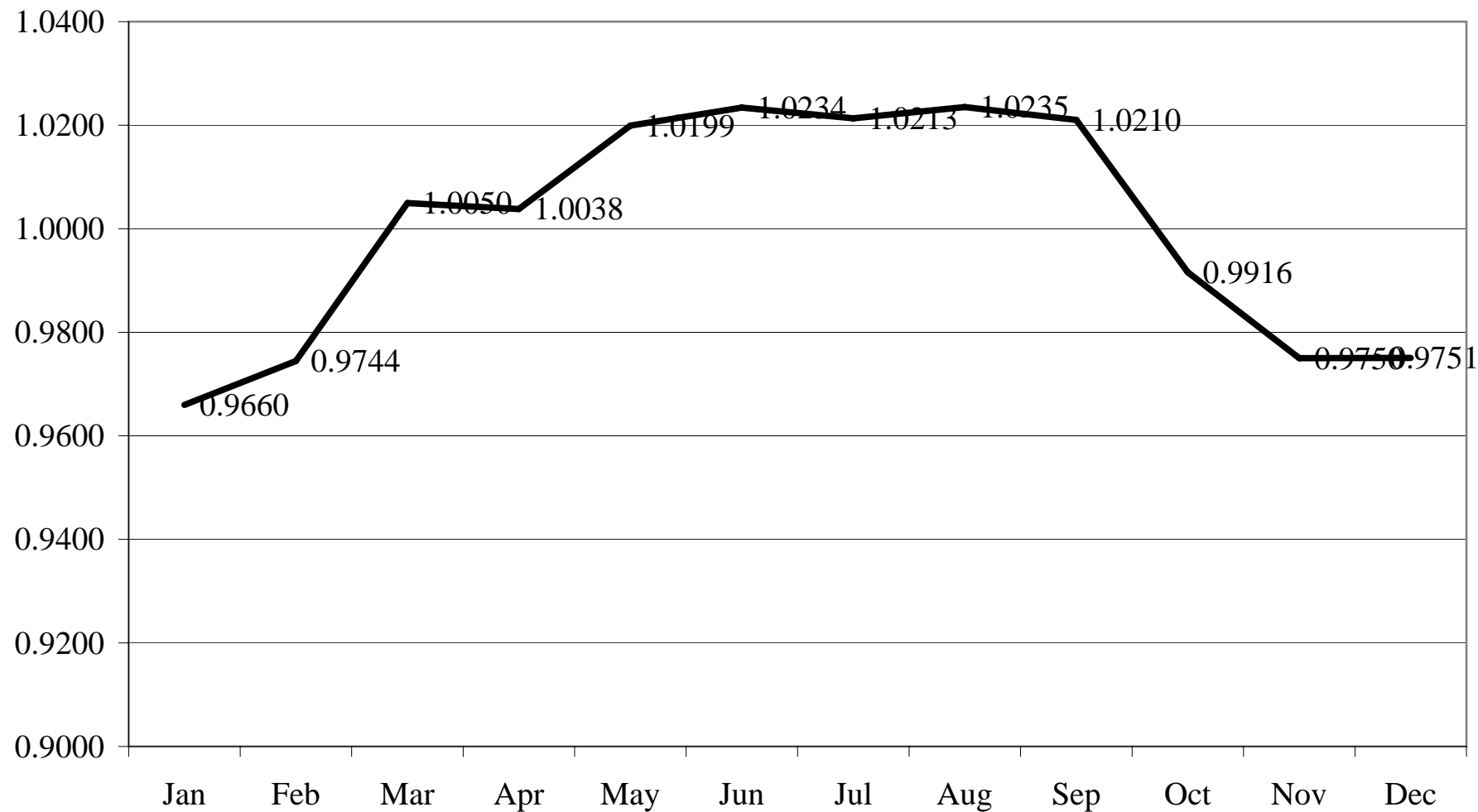
Monthly Price Index, 400-500 Pound Steers Georgia Auction Markets



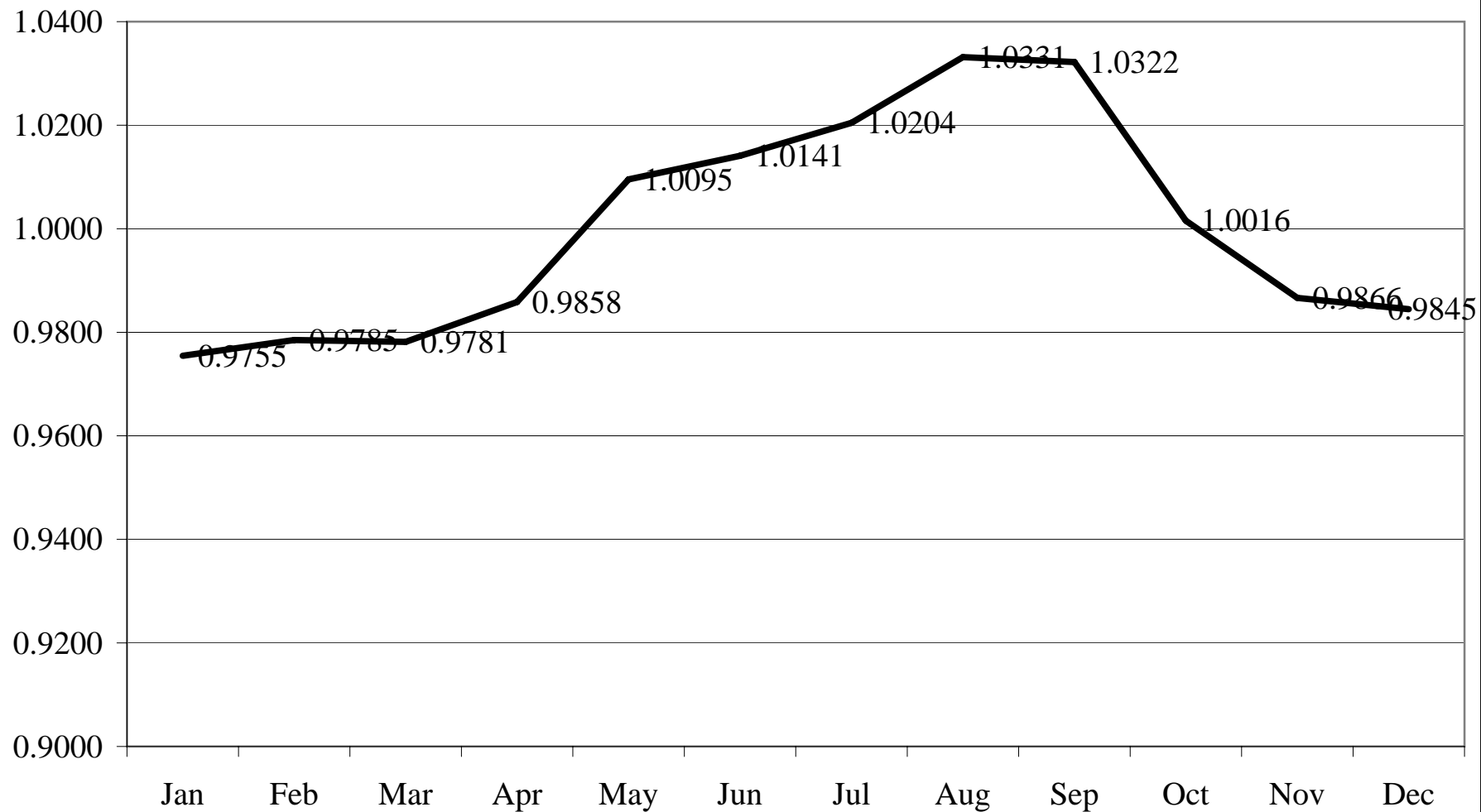
Monthly Price Index, 500-600 Pound Steers Georgia Auction Markets



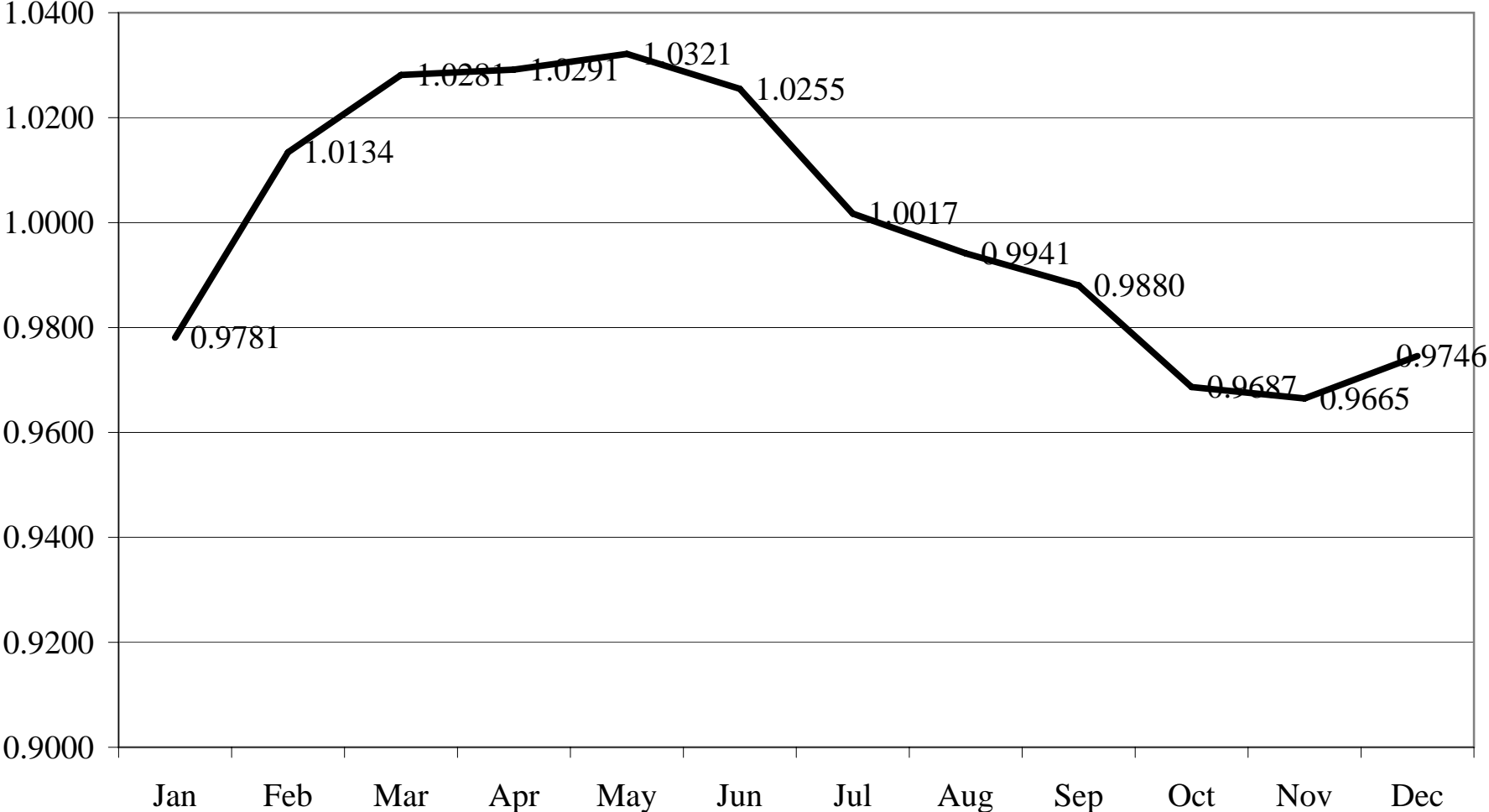
Monthly Price Index, 600-700 Pound Steers Georgia Auction Markets



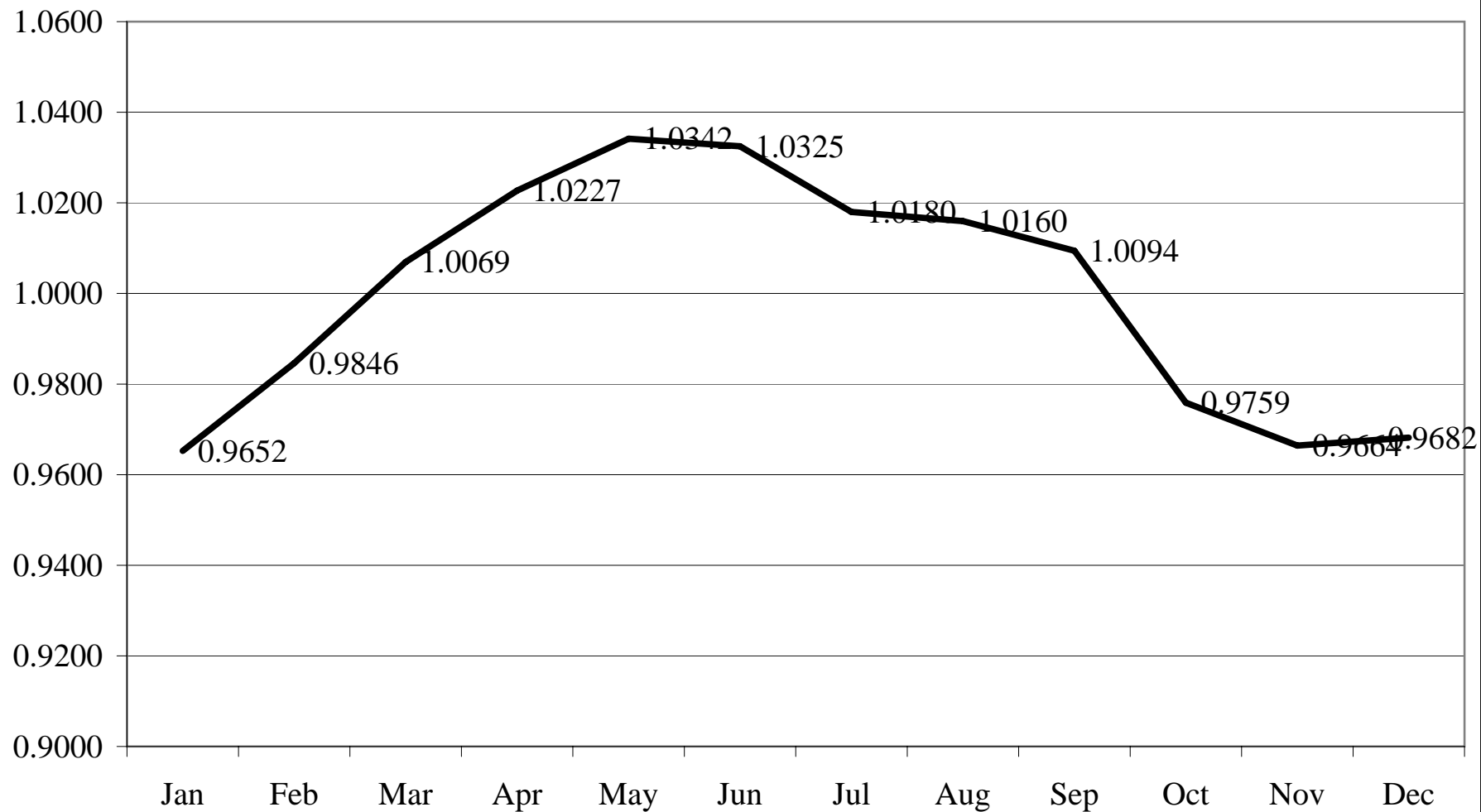
Monthly Price Index, 700-800 Pound Steers Georgia Auction Markets



Monthly Price Index, 400-500 Pound Heifers Georgia Auction Markets



Monthly Price Index, 500-600 Pound Heifers Georgia Auction Markets



Monthly Price Index, 600-700 Pound Heifers Georgia Auction Markets

