



Rice Situation and Outlook
Southern Extension Outlook
Conference
September 27, 2005

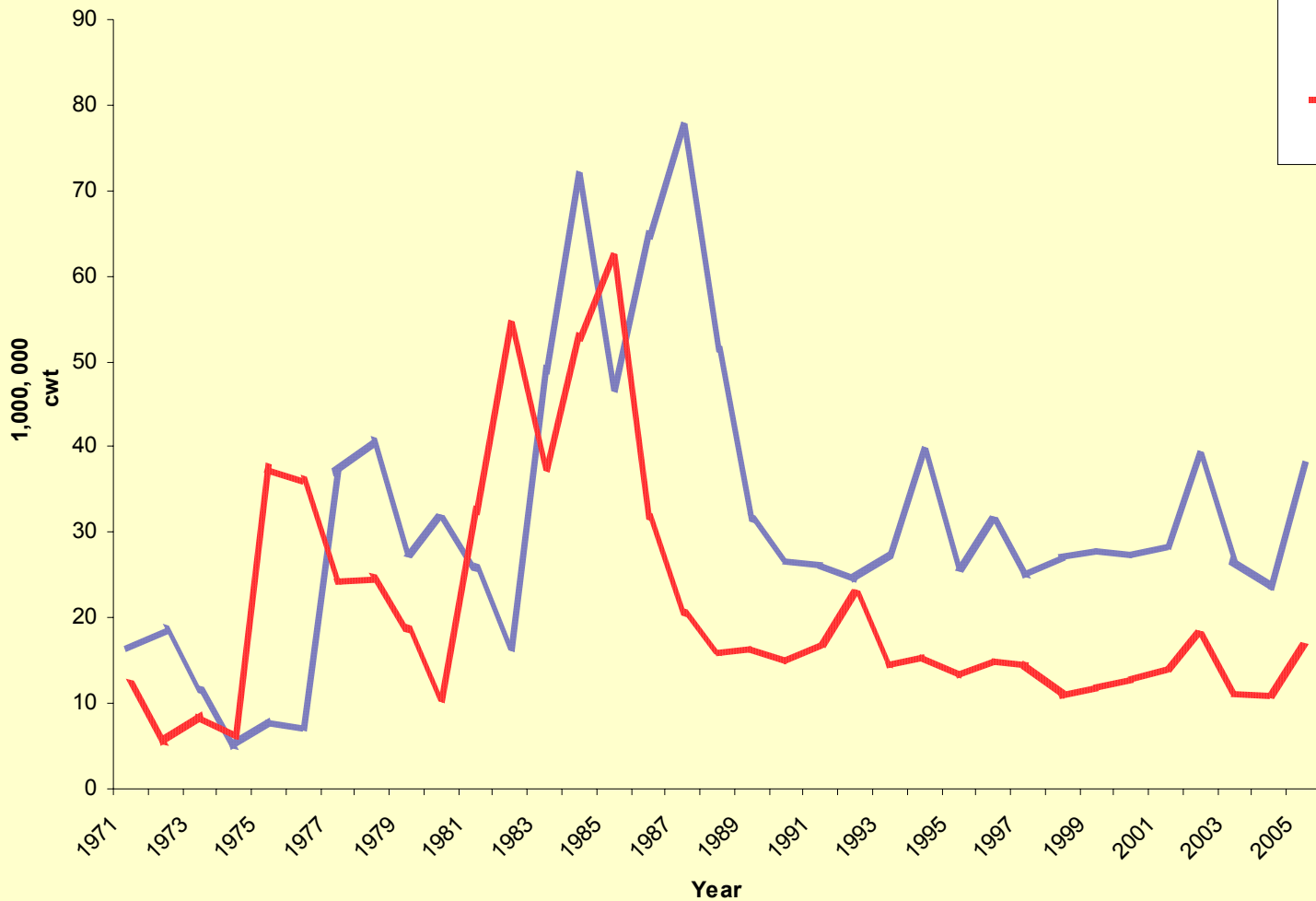
Steven W. Martin

Delta Research and Extension Center
Stoneville, MS

US Rice Supply & Use

	2003/04	2004/05	2005/06F
	million cwt		
Beginning Stocks	26.80	23.70	37.70
Production	199.90	230.80	228.30
Imports	15.00	13.30	15.00
Total Supply	241.70	267.80	281.00
Domestic Use	115.00	120.00	126.10
Exports	103.10	110.00	121.00
Total Use	218.00	230.10	247.10
Ending Stocks	23.70	37.70	33.90
Avg. Farm Price	8.08	7.33	7.25-7.55

US Rice Supply and Usage



US Rice Supply & Use

	2003/04	2004/05	2005/06F
	million cwt		
Beginning Stocks	26.80	23.70	37.70
Production	199.90	230.80	228.30
Imports	15.00	13.30	15.00
Total Supply	241.70	267.80	281.00
Domestic Use	115.00	120.00	126.10
Exports	103.10	110.00	121.00
Total Use	218.00	230.10	247.10
Ending Stocks	23.70	37.70	33.90
Avg. Farm Price	8.08	7.33	7.25-7.55

US Rice Production



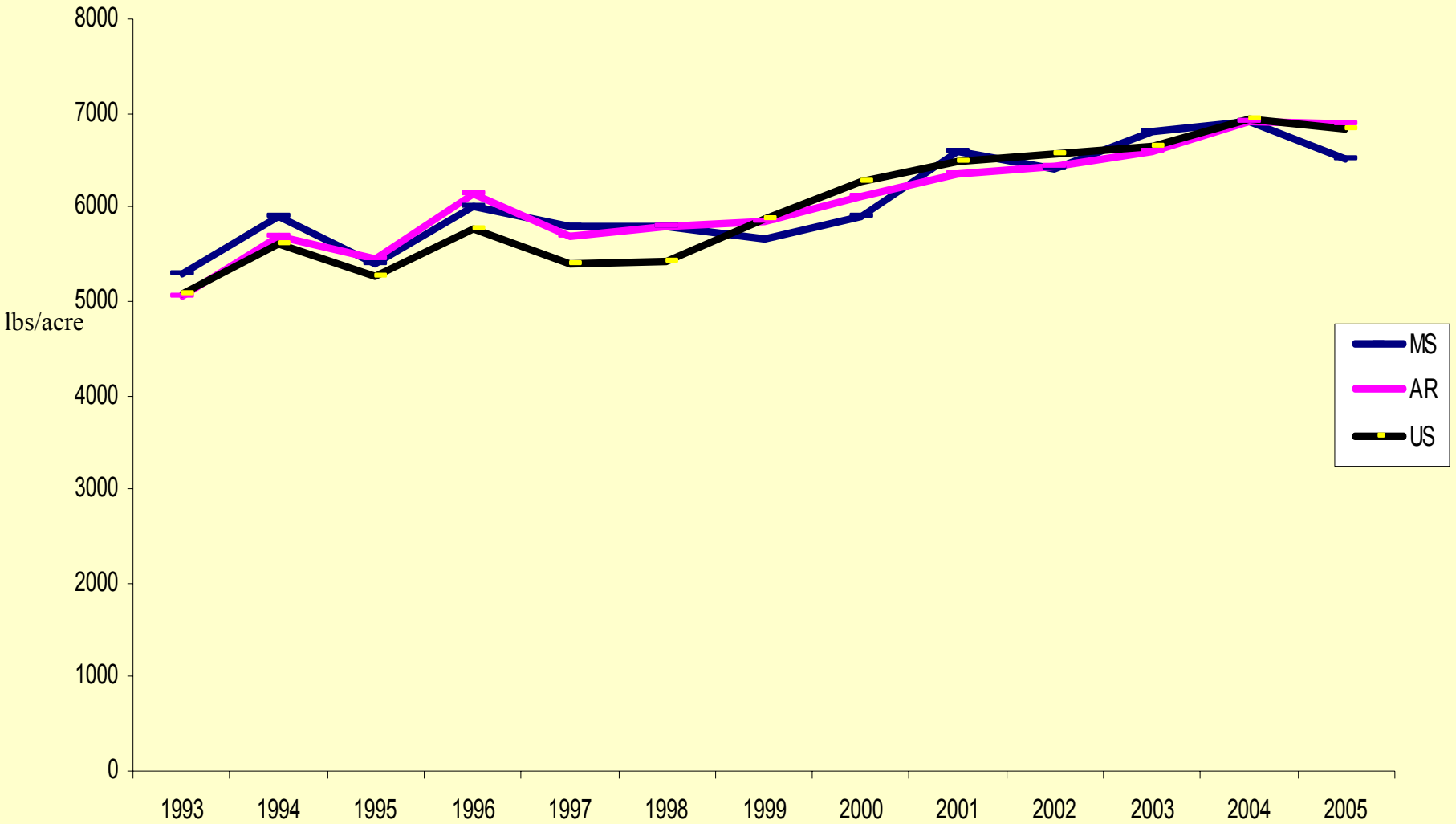
Planted Acres

	2003	2004	2005
• US	3,022,000	3,347,000	3,365,000
• AR	1,466,000	1,561,000	1,616,000
• Long Grain	2,332,000	2,587,000	2,637,000

Rough Rice Yields (lbs per acre)

	2003	2004	2005
• US	6,670	6,942	6,830
• ARK	6,610	6,910	6,880

Rice Yields

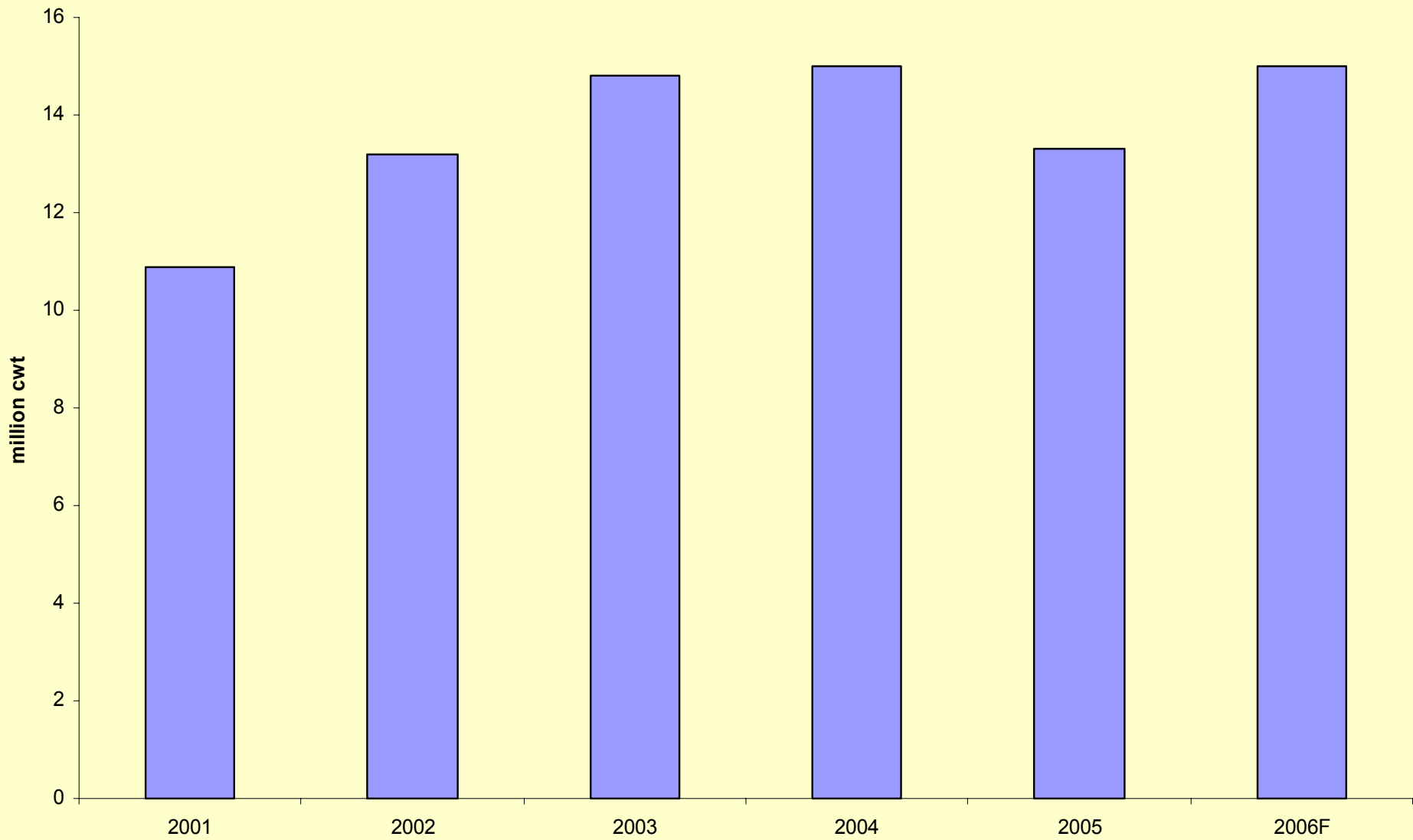


Source: NASS

US Rice Supply & Use

	2003/04	2004/05	2005/06F
	million cwt		
Beginning Stocks	26.80	23.70	37.70
Production	199.90	230.80	228.30
Imports	15.00	13.30	15.00
Total Supply	241.70	267.80	281.00
Domestic Use	115.00	120.00	126.10
Exports	103.10	110.00	121.00
Total Use	218.00	230.10	247.10
Ending Stocks	23.70	37.70	33.90
Avg. Farm Price	8.08	7.33	7.25-7.55

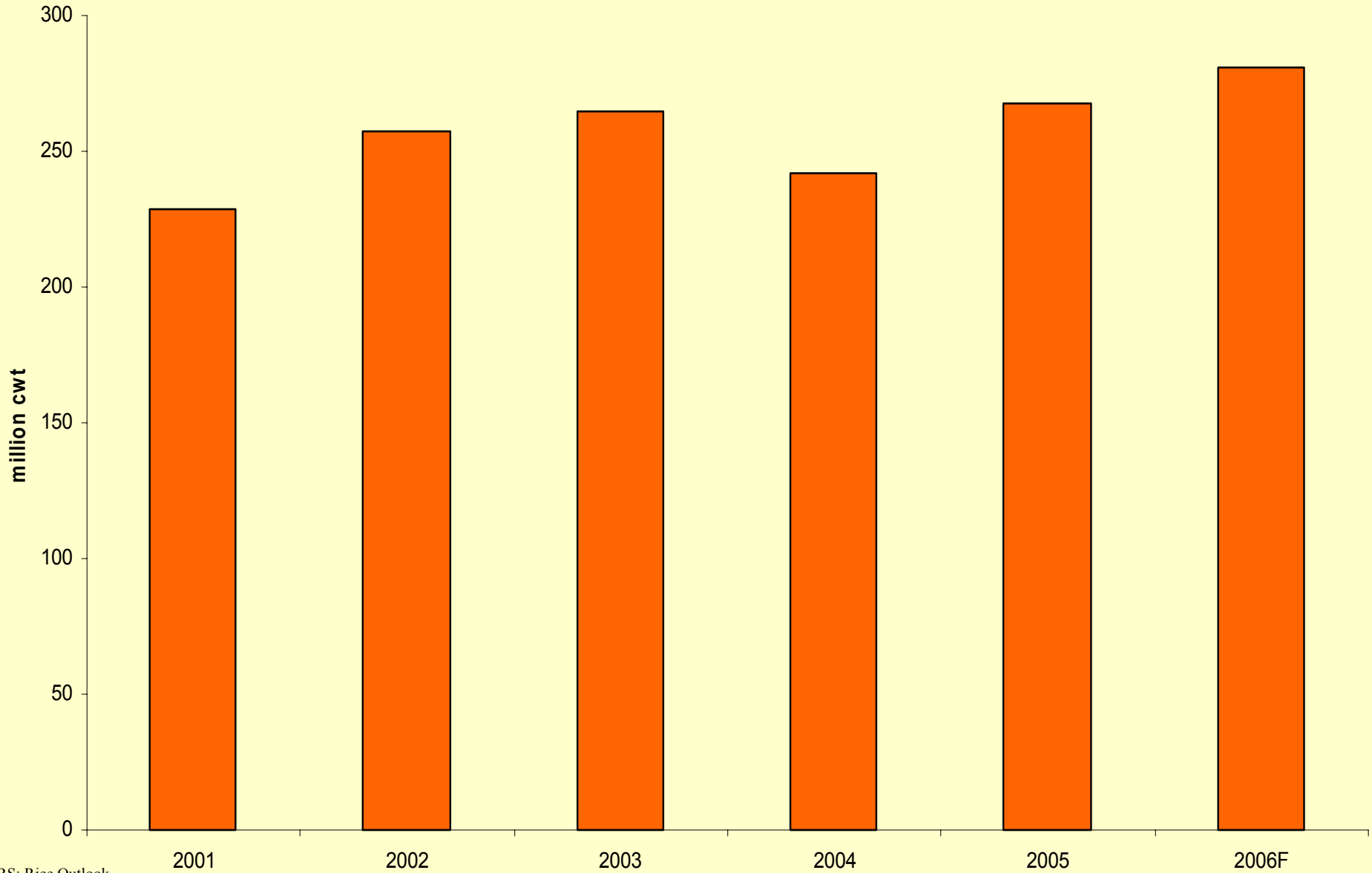
Rice Imports



US Rice Supply & Use

	2003/04	2004/05	2005/06F
	million cwt		
Beginning Stocks	26.80	23.70	37.70
Production	199.90	230.80	228.30
Imports	15.00	13.30	15.00
Total Supply	241.70	267.80	281.00
Domestic Use	115.00	120.00	126.10
Exports	103.10	110.00	121.00
Total Use	218.00	230.10	247.10
Ending Stocks	23.70	37.70	33.90
Avg. Farm Price	8.08	7.33	7.25-7.55

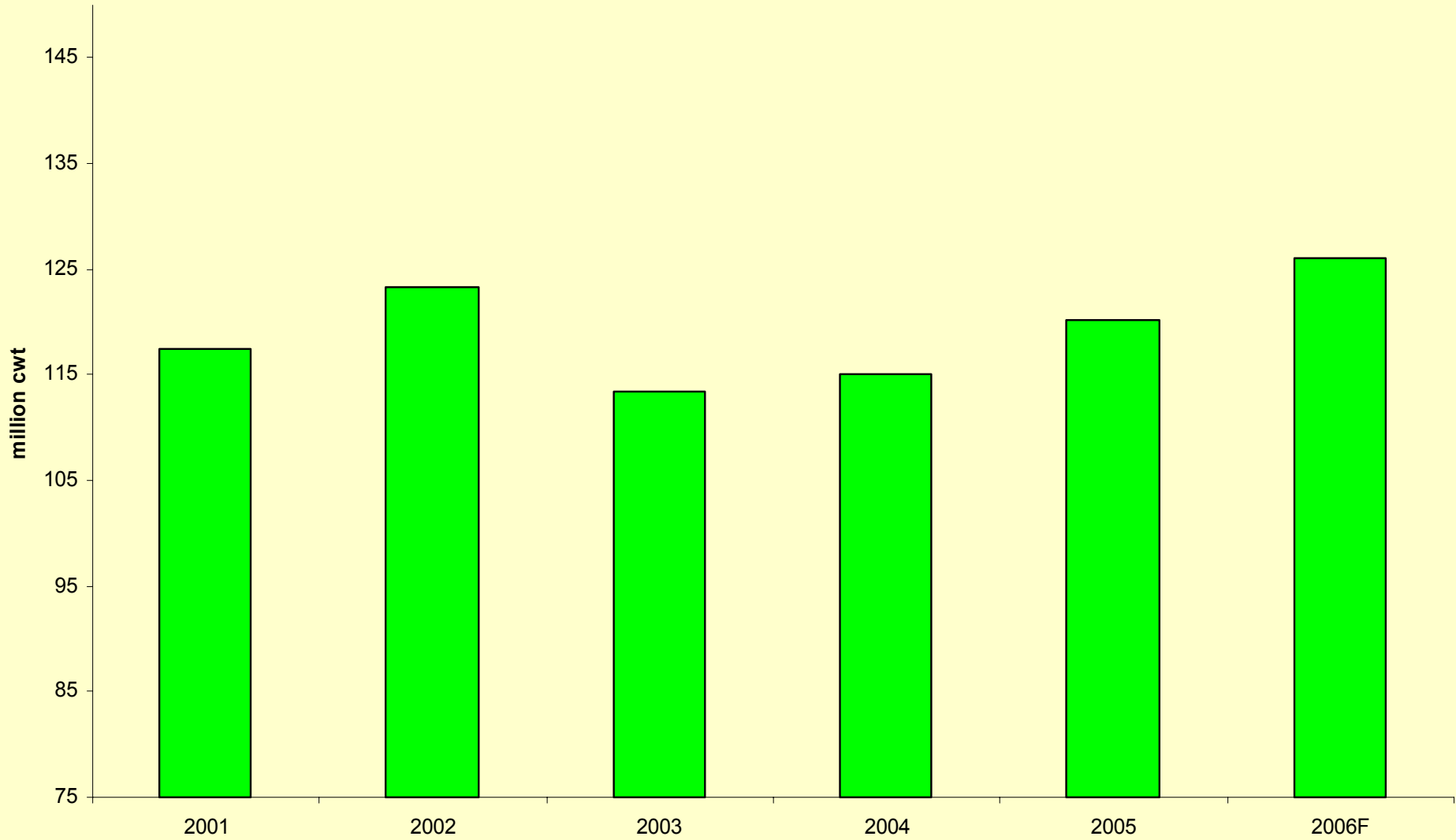
US Total Supply



US Rice Supply & Use

	2003/04	2004/05	2005/06F
	million cwt		
Beginning Stocks	26.80	23.70	37.70
Production	199.90	230.80	228.30
Imports	15.00	13.30	15.00
Total Supply	241.70	267.80	281.00
Domestic Use	115.00	120.00	126.10
Exports	103.10	110.00	121.00
Total Use	218.00	230.10	247.10
Ending Stocks	23.70	37.70	33.90
Avg. Farm Price	8.08	7.33	7.25-7.55

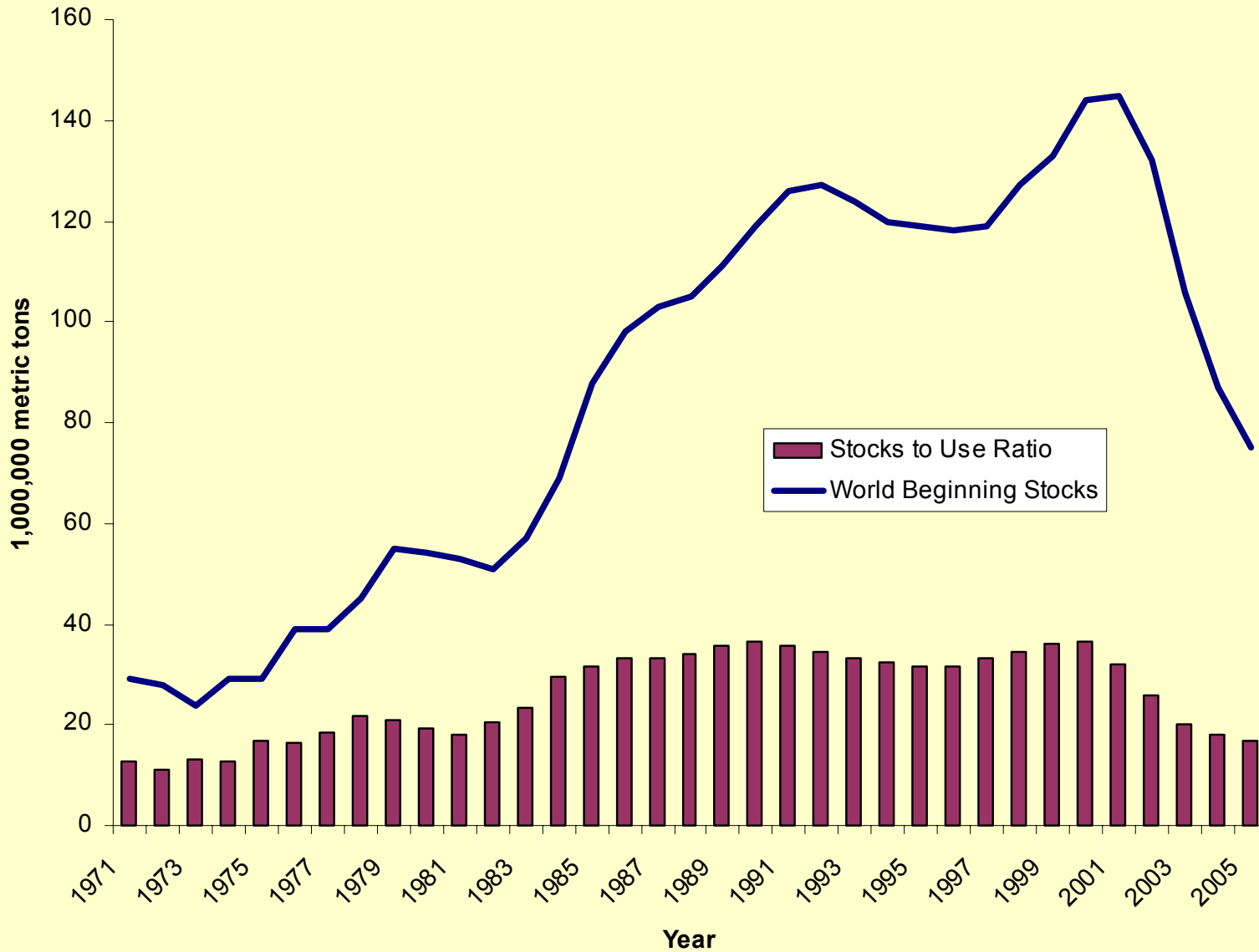
Domestic Use



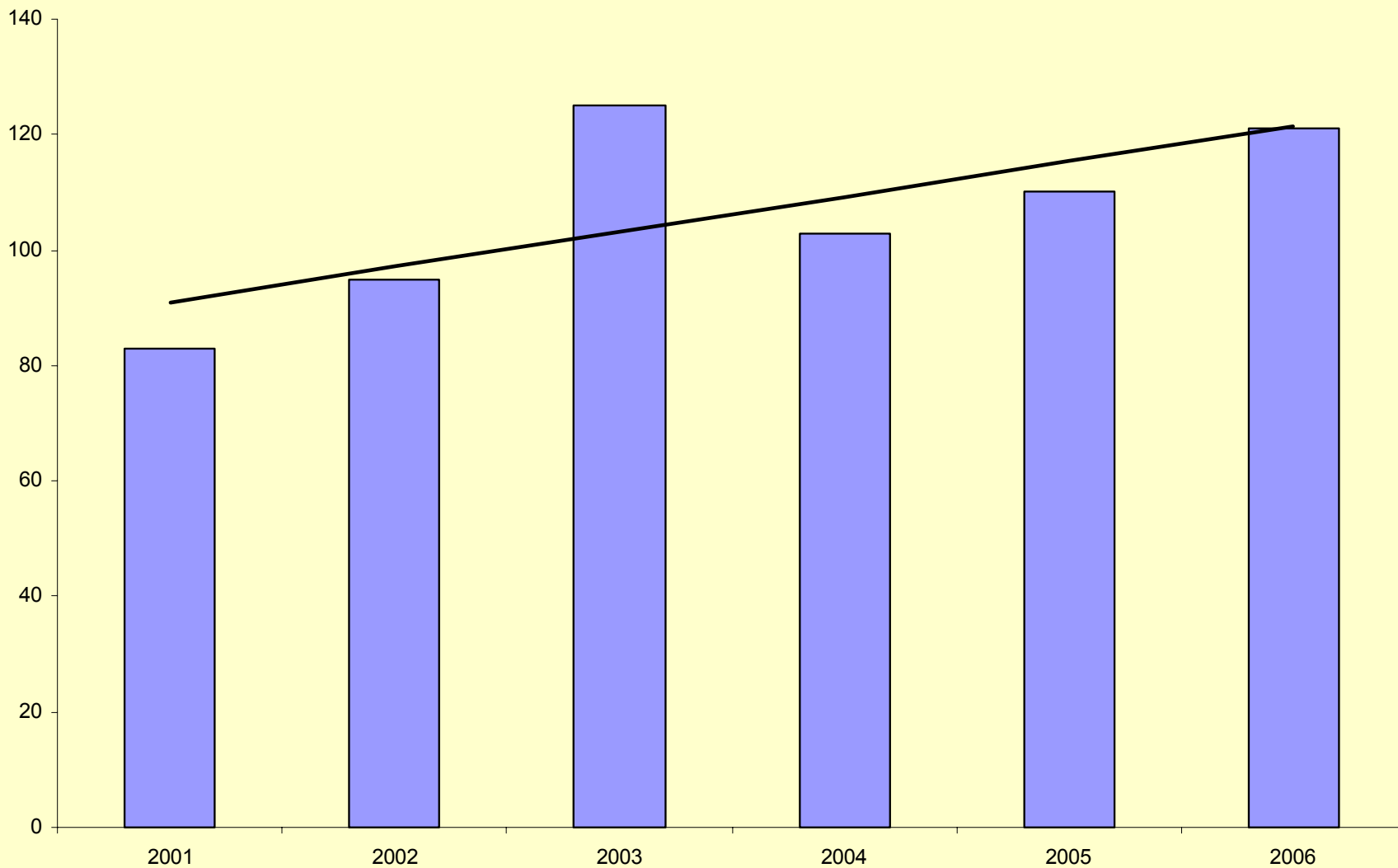
US Rice Supply & Use

	2003/04	2004/05	2005/06F
	million cwt		
Beginning Stocks	26.80	23.70	37.70
Production	199.90	230.80	228.30
Imports	15.00	13.30	15.00
Total Supply	241.70	267.80	281.00
Domestic Use	115.00	120.00	126.10
Exports	103.10	110.00	121.00
Total Use	218.00	230.10	247.10
Ending Stocks	23.70	37.70	33.90
Avg. Farm Price	8.08	7.33	7.25-7.55

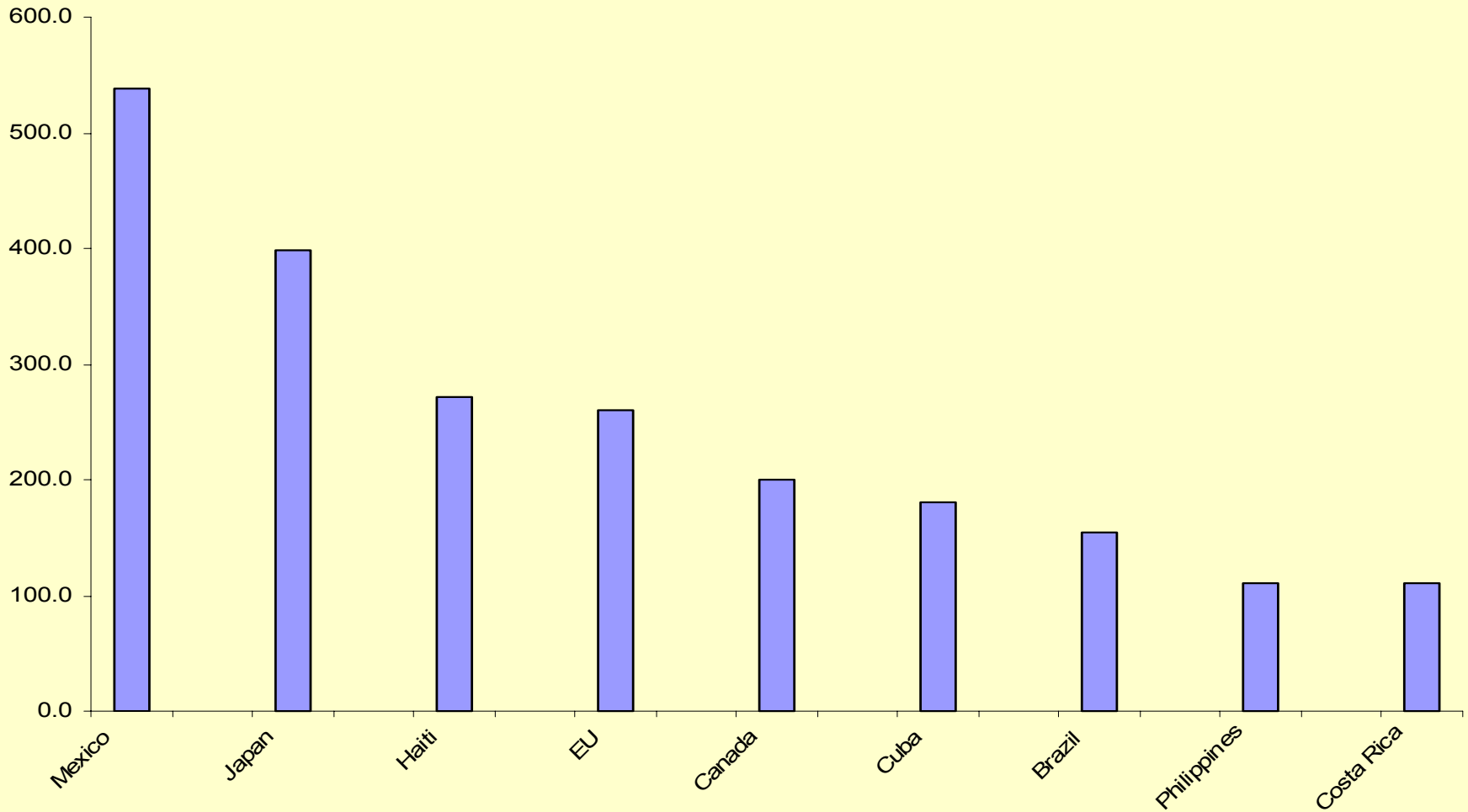
World Rice Supply and Usage



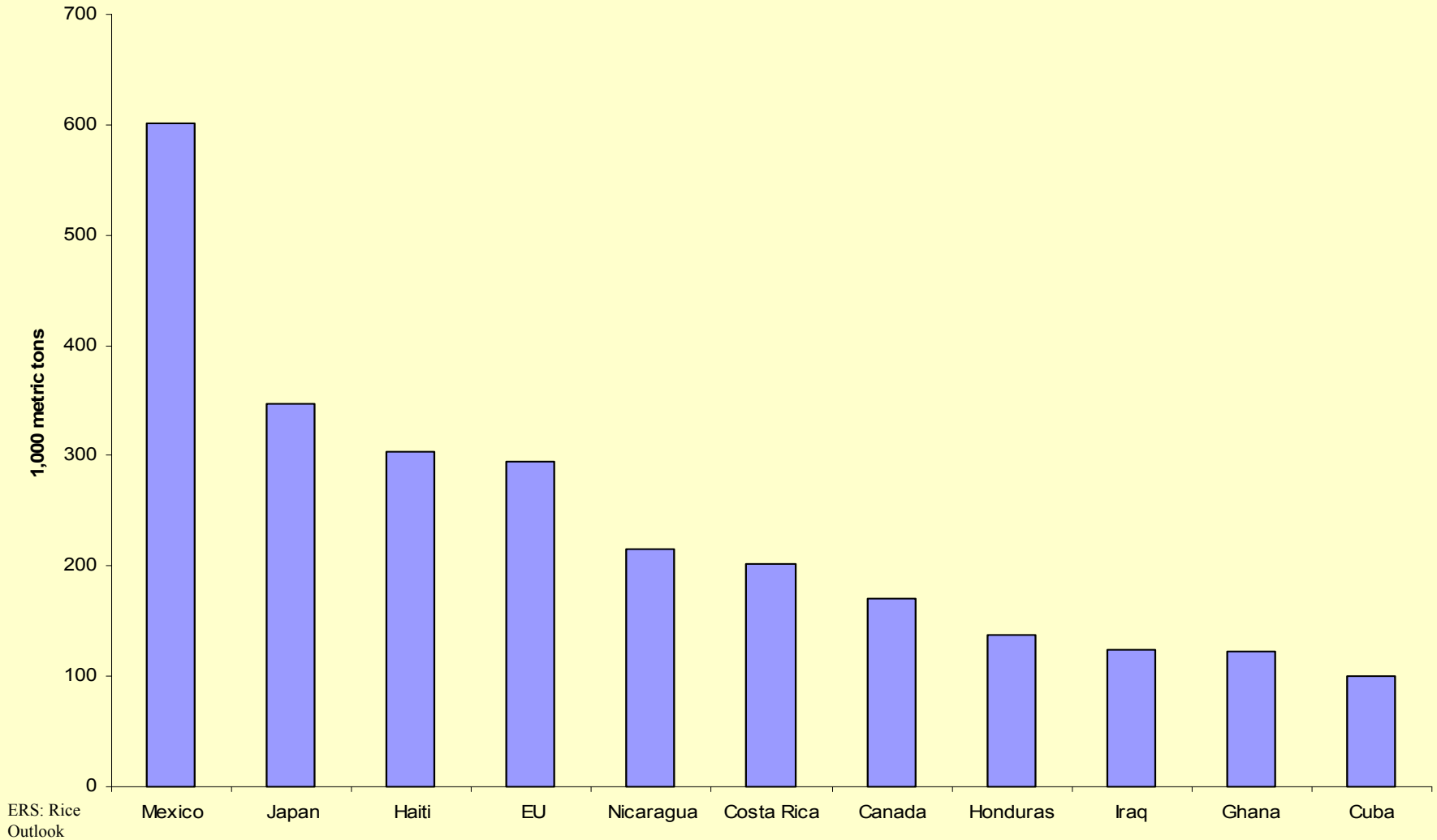
Rice Exports



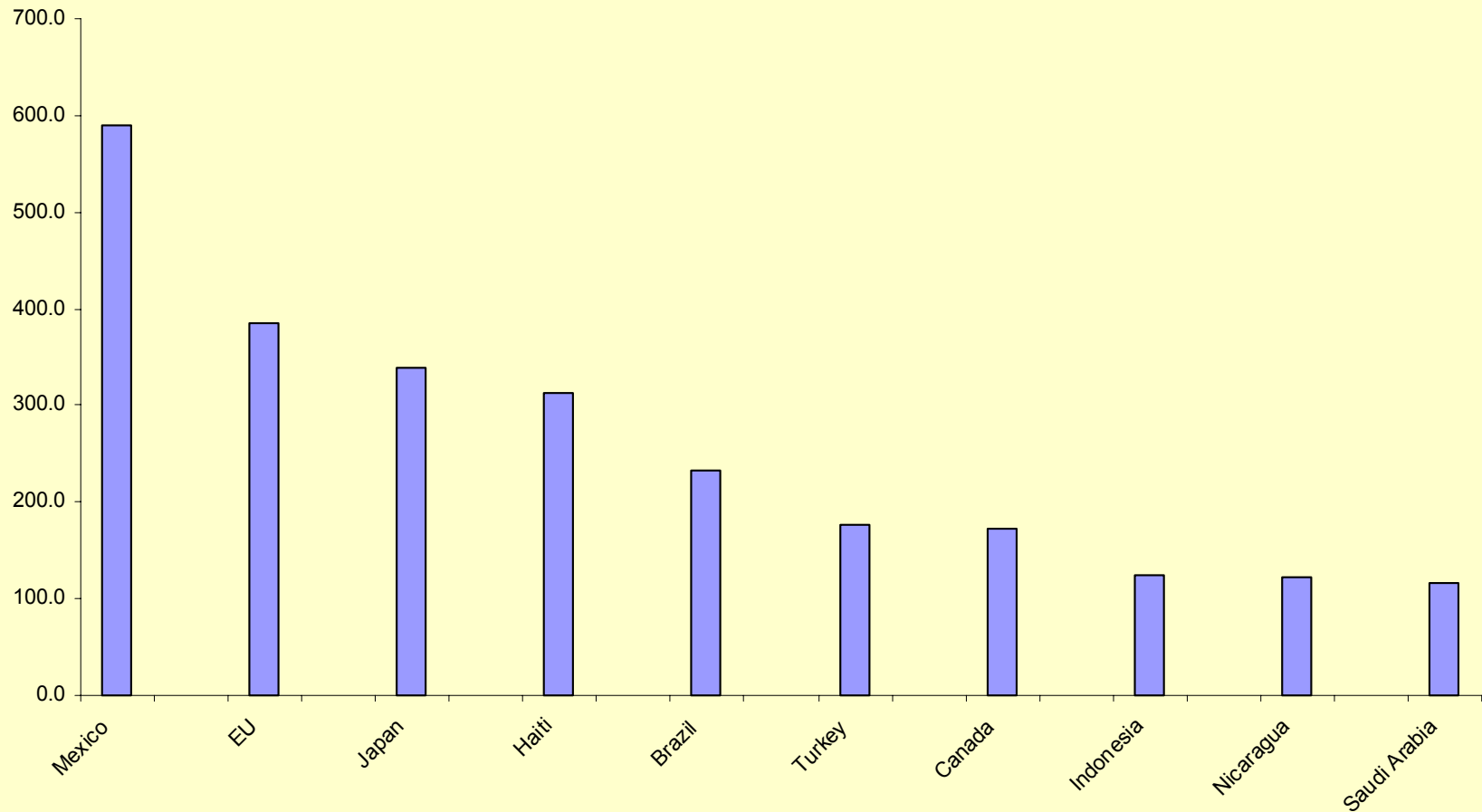
2004 Rice Export Markets



2005 Rice Export Markets



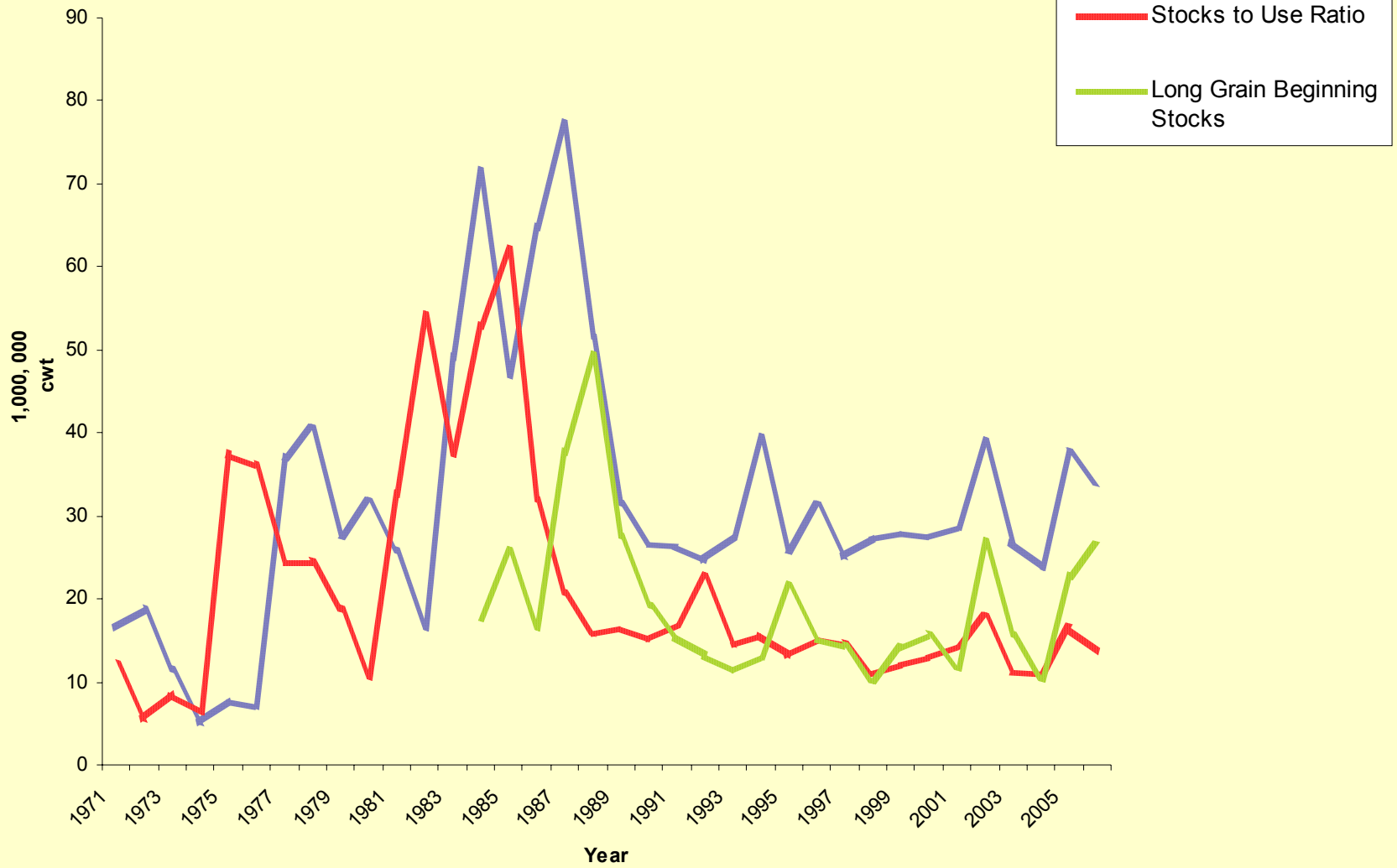
2003 Export Markets



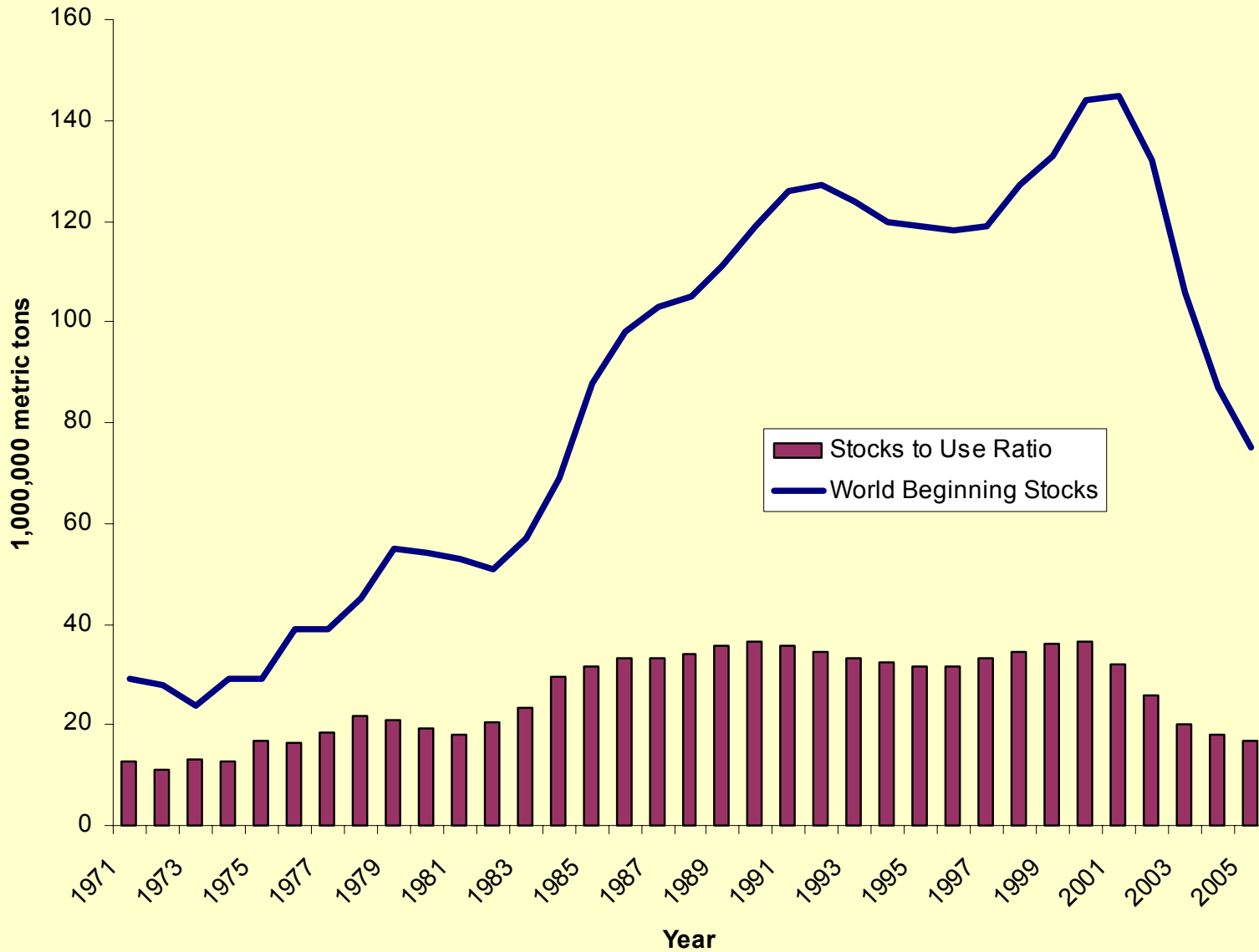
US Rice Supply & Use

	2003/04	2004/05	2005/06F
	million cwt		
Beginning Stocks	26.80	23.70	37.70
Production	199.90	230.80	228.30
Imports	15.00	13.30	15.00
Total Supply	241.70	267.80	281.00
Domestic Use	115.00	120.00	126.10
Exports	103.10	110.00	121.00
Total Use	218.00	230.10	247.10
Ending Stocks	23.70	37.70	33.90
Avg. Farm Price	8.08	7.33	7.25-7.55

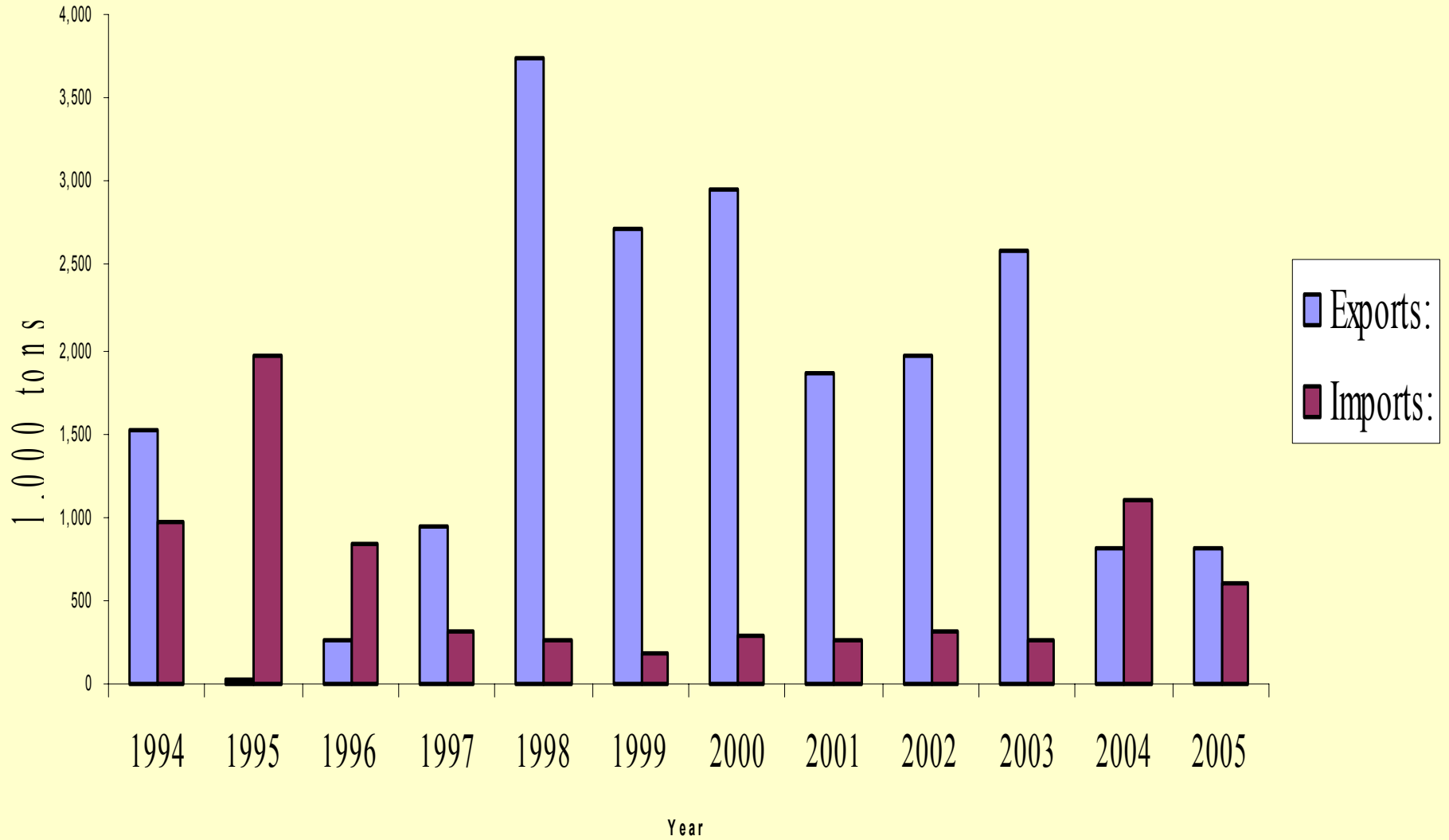
US Rice Supply and Usage



World Rice Supply and Usage



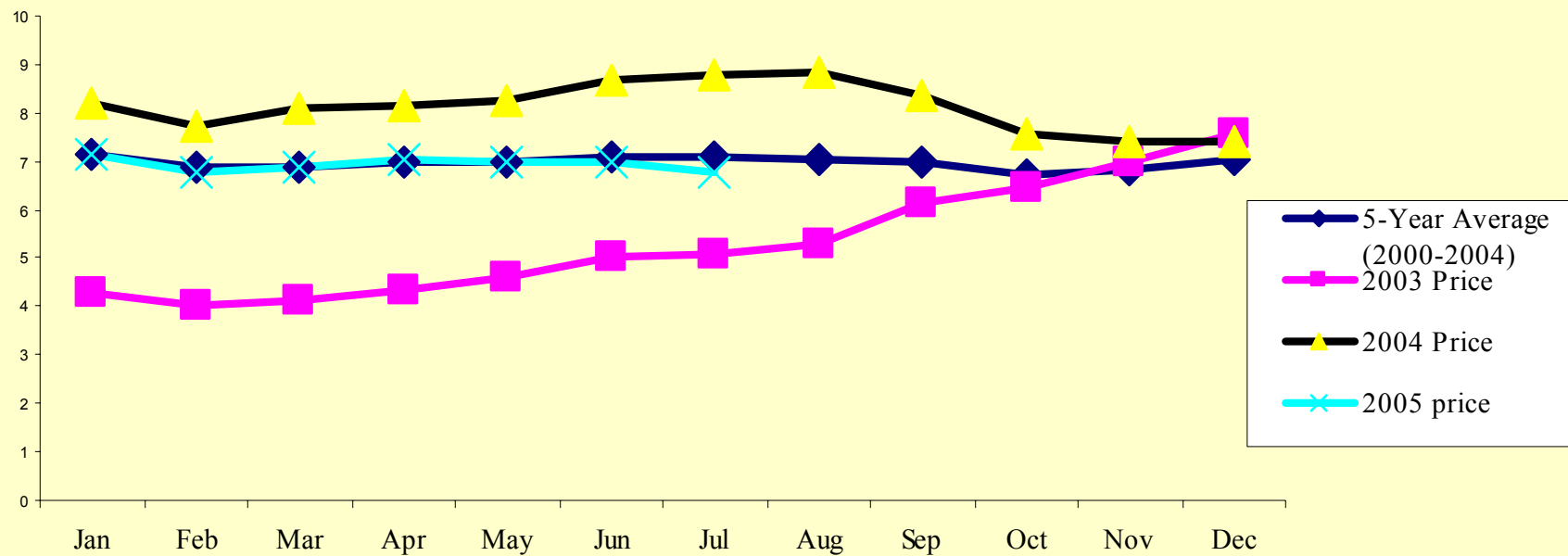
China



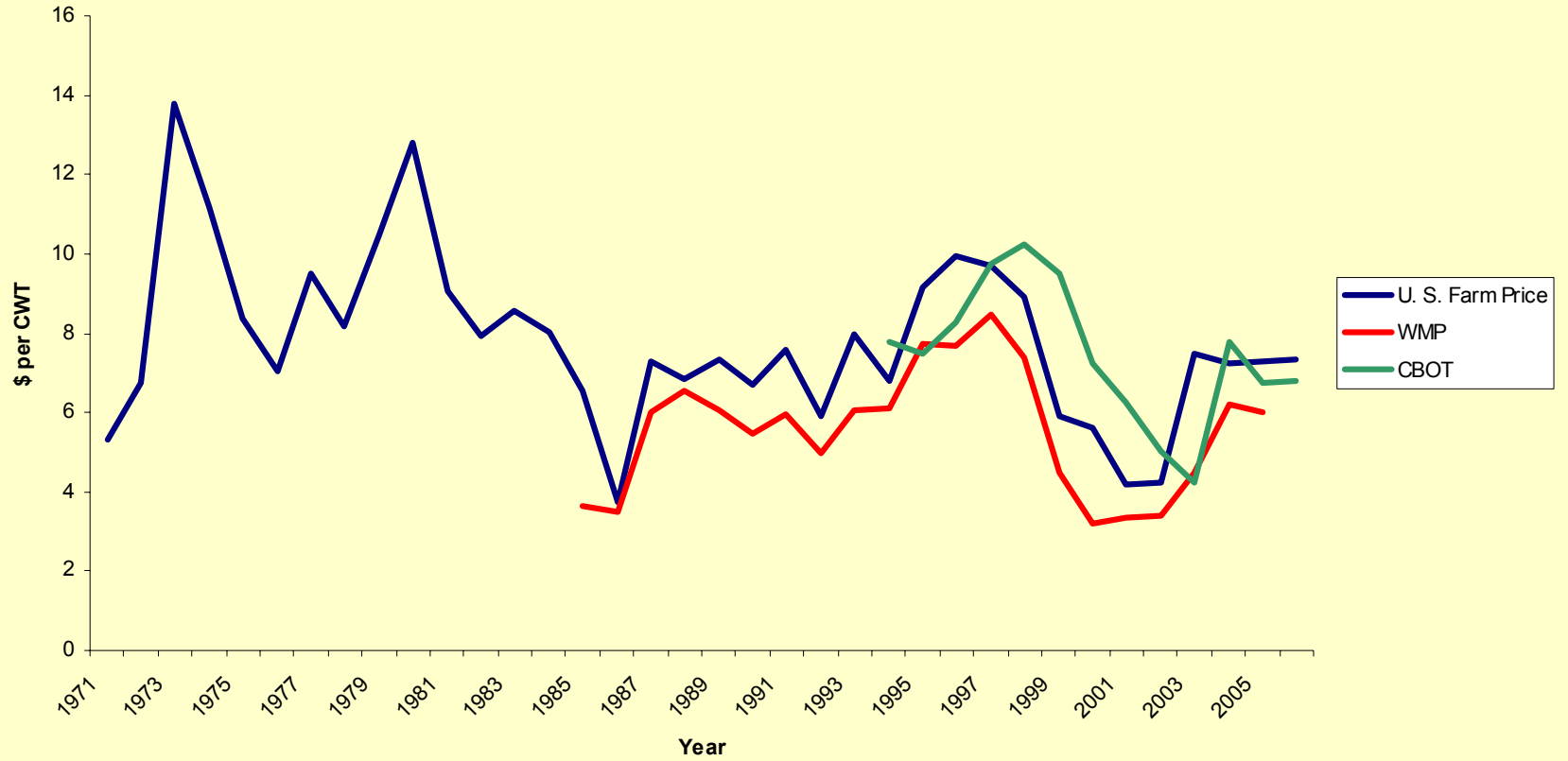
US Rice Supply & Use

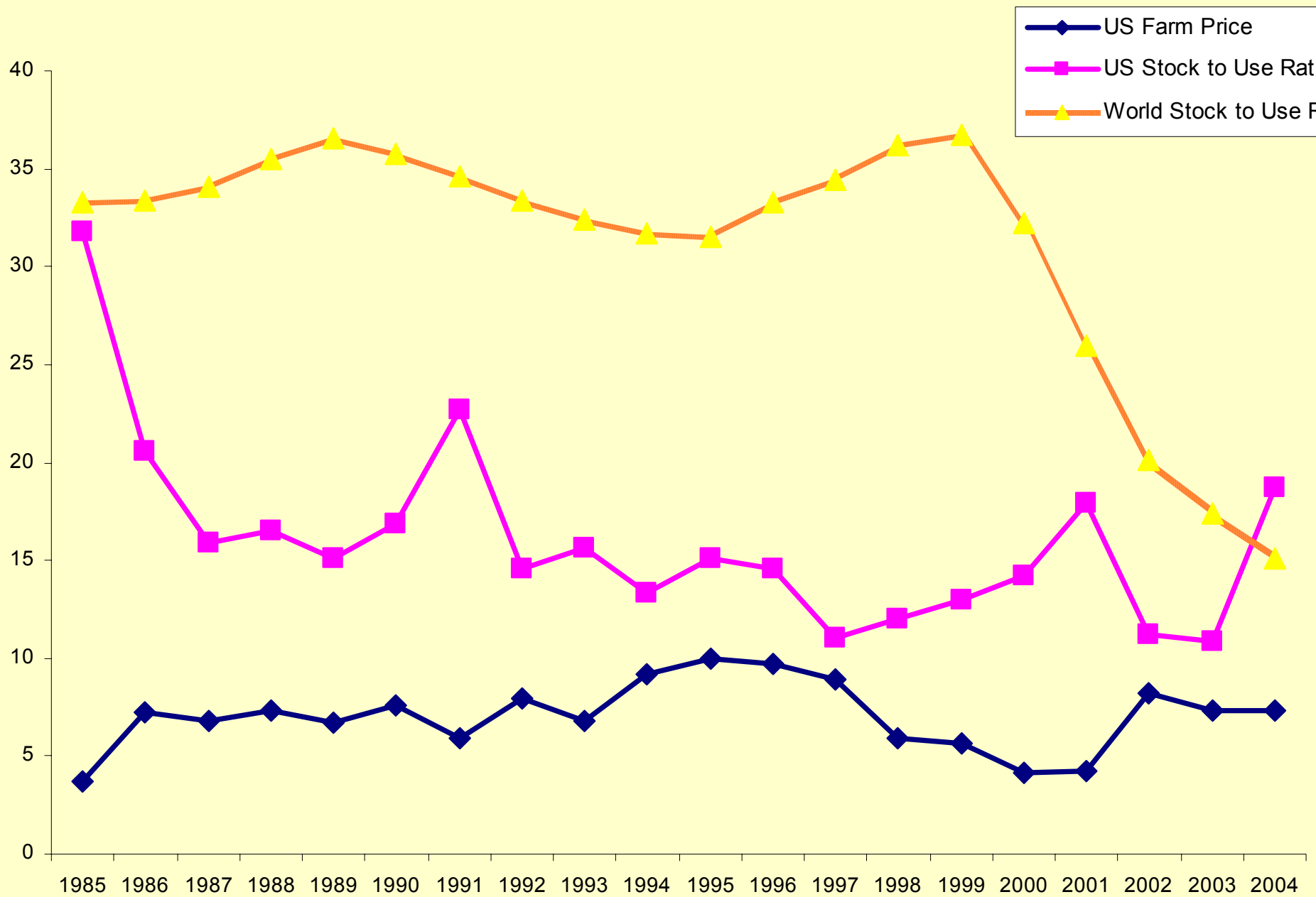
	2003/04	2004/05	2005/06F
	million cwt		
Beginning Stocks	26.80	23.70	37.70
Production	199.90	230.80	228.30
Imports	15.00	13.30	15.00
Total Supply	241.70	267.80	281.00
Domestic Use	115.00	120.00	126.10
Exports	103.10	110.00	121.00
Total Use	218.00	230.10	247.10
Ending Stocks	23.70	37.70	33.90
Avg. Farm Price	8.08	7.33	7.25-7.55

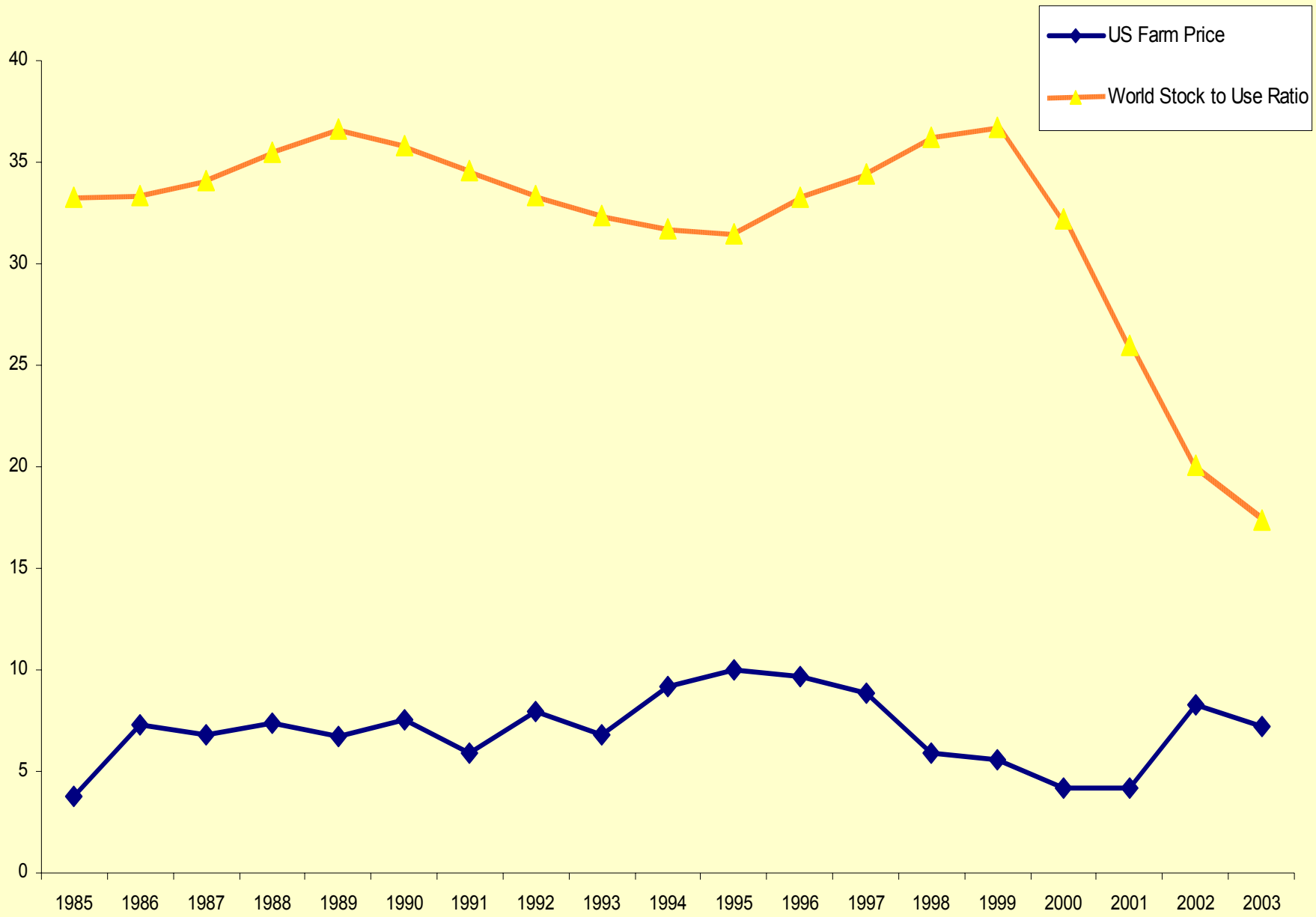
US Monthly Farm Price

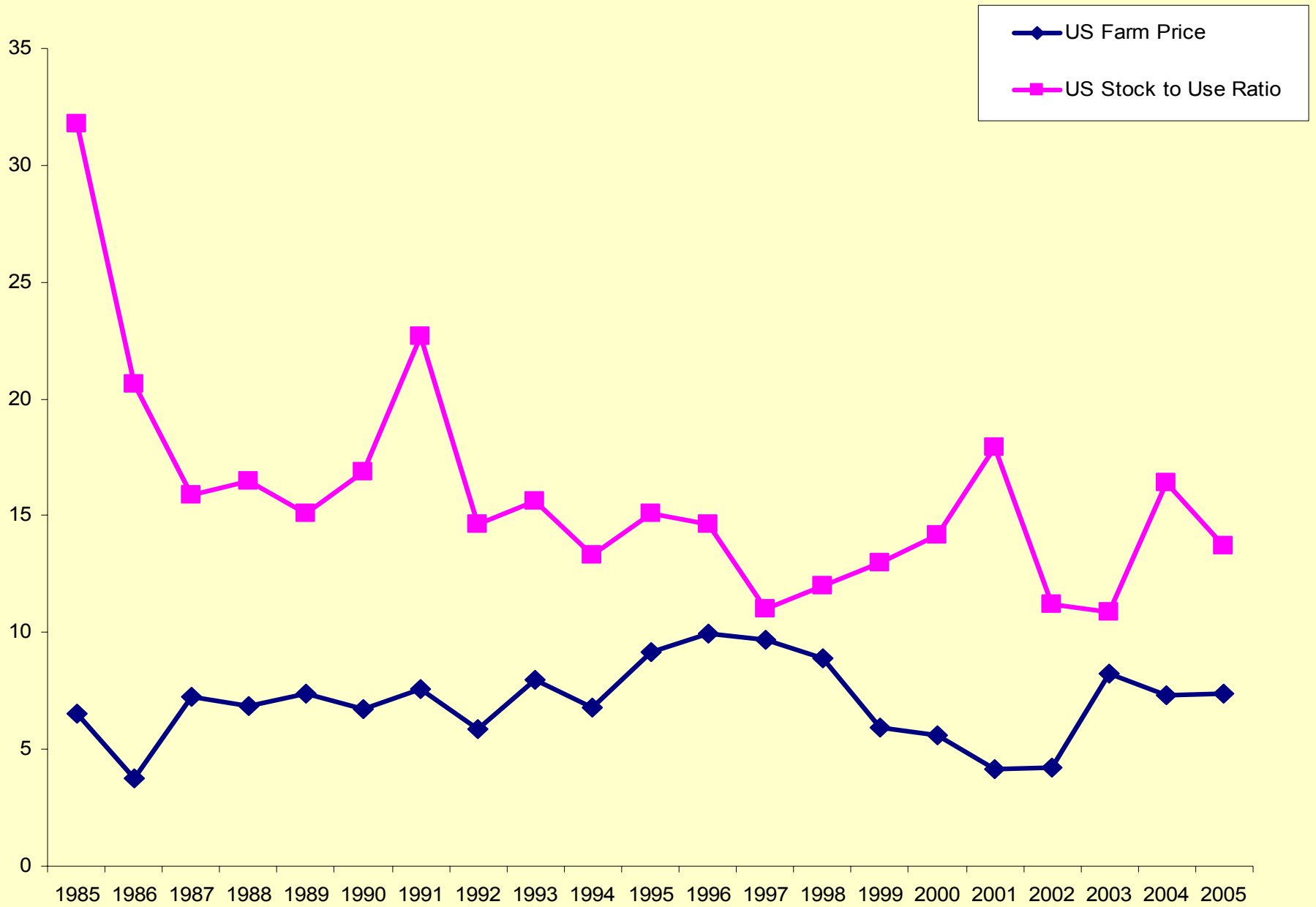


Rice Prices

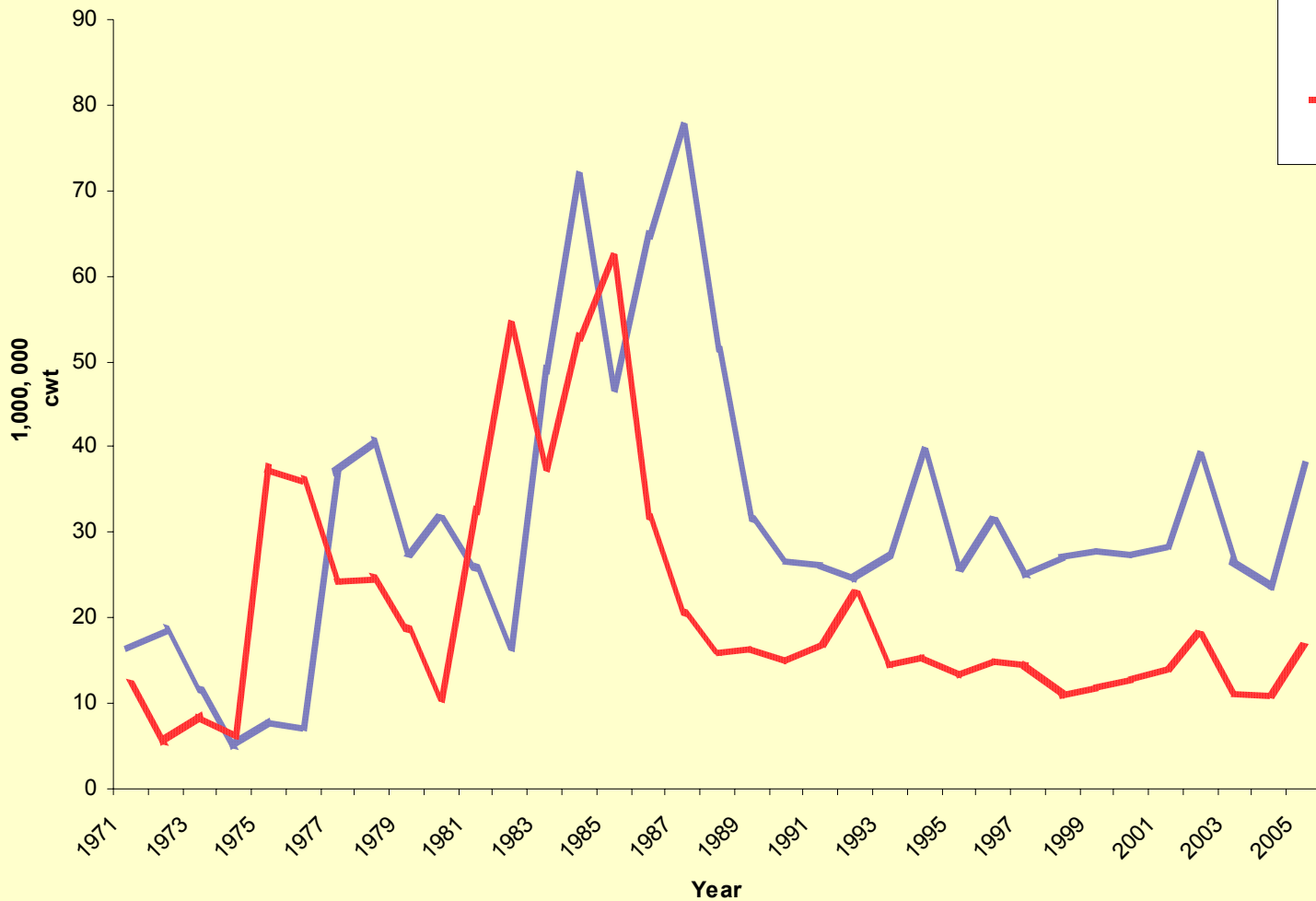




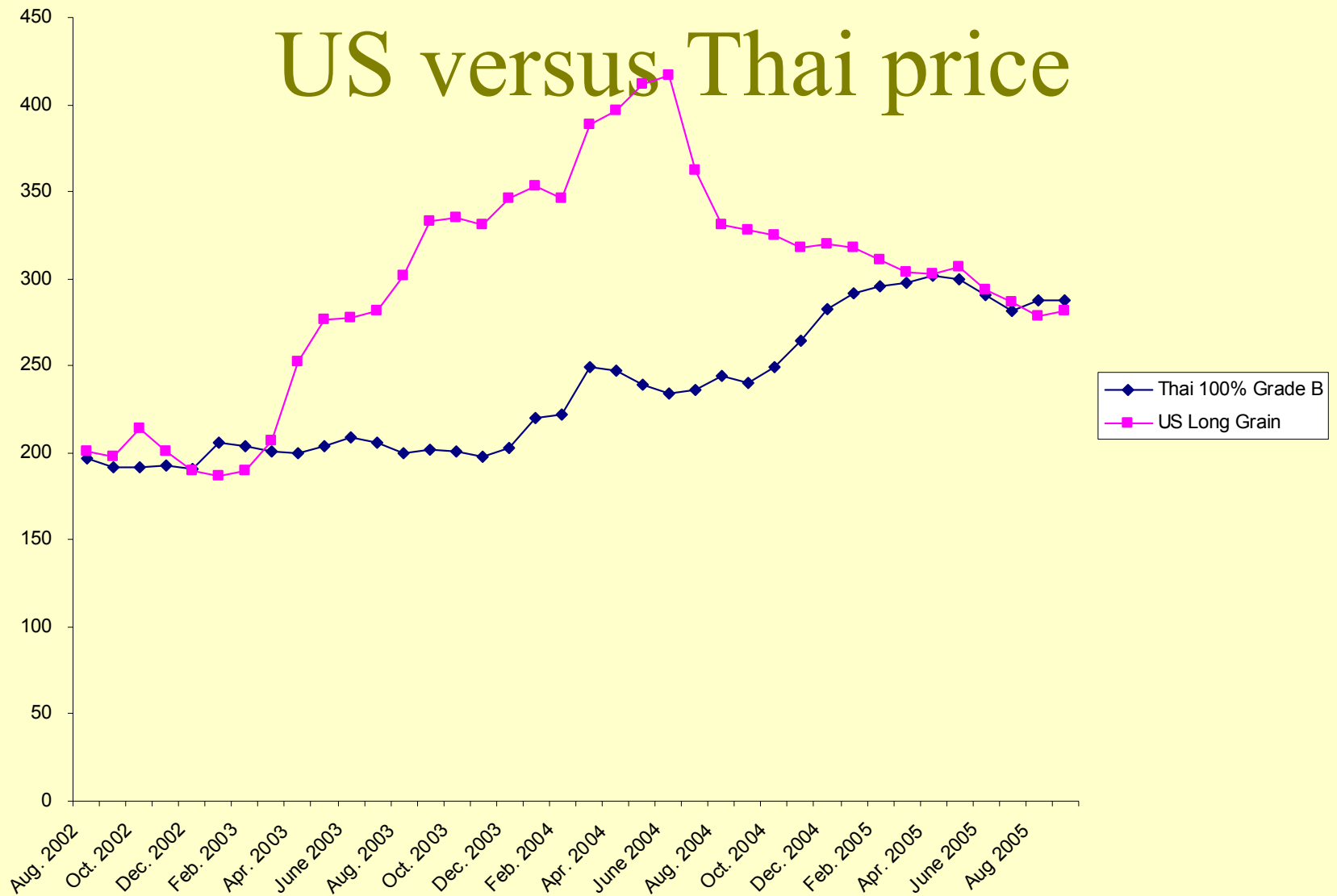




US Rice Supply and Usage



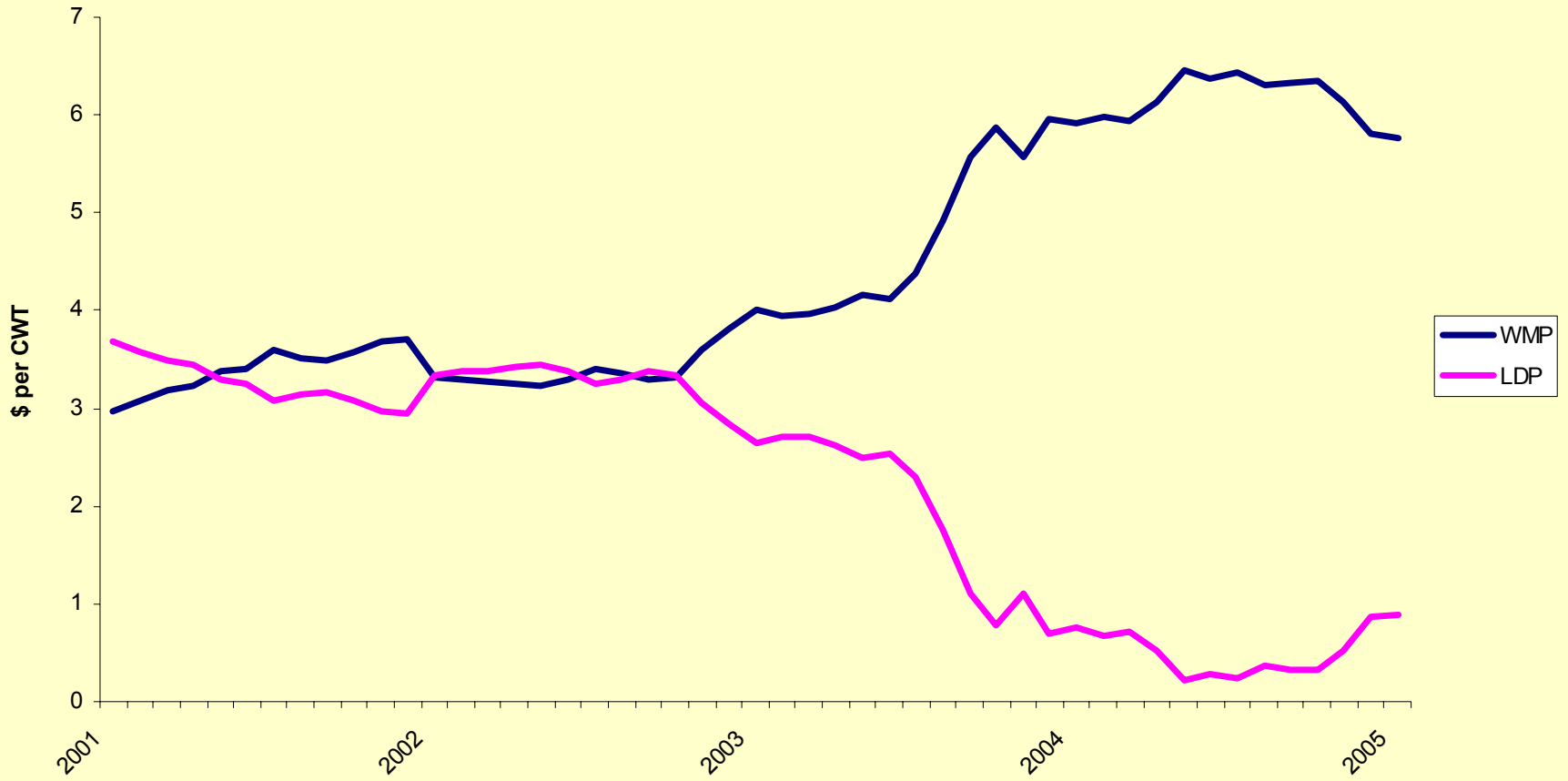
US versus Thai price



RICE

Monthly WMP and LDP

August 2001- Aug 2005



US Rice Supply & Use

	2003/04	2004/05	2005/06F
	million cwt		
Beginning Stocks	26.80	23.70	37.70
Production	199.90	230.80	228.30
Imports	15.00	13.30	15.00
Total Supply	241.70	267.80	281.00
Domestic Use	115.00	120.00	126.10
Exports	103.10	110.00	121.00
Total Use	218.00	230.10	247.10
Ending Stocks	23.70	37.70	33.90
Avg. Farm Price	8.08	7.33	7.25-7.55

Summary

- Price Forecast thru Dec 2005- Large quantities of 2004 & 2005 rice, harvest pressure, Thai government selling etc,
- Do not expect to see price rally
- Calendar year 2006 - IF export market can fulfill current projections and IF pick up some other business ... could be interesting.
- No reason to sell at harvest unless



US Rice Supply & Use

	2003/04	2004/05	2005/06F
	million cwt		
Beginning Stocks	26.80	23.70	37.70
Production	199.90	230.80	228.30
Imports	15.00	13.30	15.00
Total Supply	241.70	267.80	281.00
Domestic Use	115.00	120.00	126.10
Exports	103.10	110.00	121.00
Total Use	218.00	230.10	247.10
Ending Stocks	23.70	37.70	33.90
Avg. Farm Price	8.08	7.33	7.25-7.55

US Rice Supply & Use

	2003/04	2004/05	2005/06F
	million cwt		
Beginning Stocks	26.80	23.70	37.70
Production	199.90	230.80	228.30
Imports	15.00	13.30	15.00
Total Supply	241.70	267.80	281.00
Domestic Use	115.00	120.00	126.10
Exports	103.10	110.00	121.00
Total Use	218.00	230.10	247.10
Ending Stocks	23.70	37.70	33.90
Avg. Farm Price	8.08	7.33	7.25-7.55